

WRITTEN

NO. W172 OF 2014

THE HON J J NETTO

Further to the answer to Written Question No. 74 of 2014, will the Government provide Parliament with a copy of the preliminary report made by Marine Accident Compliance Officer now and the final copy once it is finalised?

ANSWER

The investigation is still ongoing. Once the Marine Accident Investigation Compliance Officer completes the investigation and publishes the report, this will be made available to the public.

WRITTEN

NO. W173 OF 2014

THE HON J J NETTO

Further to the answer given to Written Question No. 80 of 2014, can the Minister for Utilities please provide Parliament with a copy of the New Power Station tender scope and evaluation cost?

ANSWER

HM Government of Gibraltar is not in a position to provide a copy of the tender scope and evaluation costs as it contains sensitive commercial information.

WRITTEN

NO. W174 OF 2014

THE HON J J NETTO

Further to the answer to Written Question No. 92 of 2014 & 93 of 2014, can the Minister for the Environment state when it is intended to award the tenders for Waste Treatment and Waste Water Treatment?

ANSWER

Both the Waste Treatment and Waste Water Treatment tenders are currently in the tender assessment stages.

The Government will not be in a position to award these tenders until all the relevant technical, financial and legal assessments have been completed.

WRITTEN

NO. W175 OF 2014

THE HON J J NETTO

Further to the answer given to Written Question No. 99 of 2014, can the Minister for the Environment say when, at what sites and for what reason/s was the Coastal Waters not of a 'generally of good status'?

ANSWER

All the monitoring sites within Gibraltar's Coastal Waters achieve good status with the exception of the monitoring site located in the Gibraltar Harbour which failed the 'good chemical' status target in the assessment carried out under the Gibraltar River Basin Management Plan.

This was attributed to the recorded levels of tributyltin (TBT) which have been monitored over the full duration of the Coastal Monitoring Programme since its inception in 2009.

WRITTEN

NO. W176 OF 2014

THE HON J J NETTO

Further to the answer to Written Question No. 103 of 2014, can the Minister for the Environment say what development has taken place, since this question was last asked prior to last month?

ANSWER

Preparation of release sites and temporary holding areas is nearing completion.

We expect to receive a number of young Barbary Partridges in the coming weeks.

WRITTEN

NO. W177 OF 2014

THE HON J J NETTO

Further to the answer to Written Question No. 104 of 2014, can the Minister please provide the number of predators culled since the question was asked in 2013, and stating the type of predator as well?

ANSWER

The total number of predators culled in 2013 was 2,649 and 127 eggs destroyed.

The total number in 2014, up to the end of April, has been 690 and 104 eggs destroyed.

The predator in question is the Yellow Legged Gull (*Larus michahellis*).

NO. W178 OF 2014

THE HON J J NETTO

Further to the answer given to Written Question No. 105 of 2014, can the Minister for the Environment state what contribution to a reduction to our carbon footprint will be made as a result of the road traffic modelling report made by Ricardo-AEA?

ANSWER

It is not possible to quantify the contributions made by consultancy services to a reduction in our carbon footprint. Geoff Lye is providing expert advice and support to the Government's climate change task force, with a view to delivering a climate change strategy later on in the year. The intention is that this strategy will set out a series of actions that will deliver a carbon footprint reduction; however, it is not possible to assign these reductions to particular individuals or reports, but rather to the actions themselves.

Mr Lye is the Chairman of SustainAbility (an international think tank and advisory firm) and a research fellow at Oxford University, specialising in climate change strategies. His contribution towards the climate change programme development has involved gathering data, developing a framework for Gibraltar's climate change ambition and priorities and identifying key levers of change in terms of policy, low carbon investment and public engagement. He has particular experience of bringing the private sector on board with climate change initiatives and is working closely with the Chamber of Commerce and the Gibraltar Federation of Small Businesses to this effect.

NO. W179 OF 2014

THE HON J J NETTO

Further to the answer given to Written Question No. 105 of 2014, can the Minister for the Environment state what contribution to a reduction to our carbon footprint will be made as a result of the payments to ECOFYS in relation to consultancy fees in respect of the development of a National Energy Efficiency Action Plan and Building Renovation Strategy?

ANSWER

It is not possible to quantify the contributions made by consultancy services to a reduction in our carbon footprint.

The development of a National Energy Efficiency Action Plan and Building Renovation Strategy are EU requirements under the Energy Efficiency Directive. The aim of these documents is to set out a framework within which Gibraltar will seek to increase its overall energy efficiency by encouraging greater uptake of energy efficient technologies, raising building standards and increasing the share of renewable energy generation. All of these measures will serve to reduce the overall amount of energy that is needed from fossil fuels, thus reducing our carbon footprint.

NO. W180 OF 2014

THE HON J J NETTO

Further to the answer given to Written Question No. 105 of 2014, can the Minister for the Environment state what contribution to a reduction to our carbon footprint will be made as a result of the payment made to Mr Geoff Lye in respect to consultancy services on climate change?

ANSWER

The road modelling report by Ricardo-AEA does not seek to reduce our carbon footprint, but to quantify the emissions produced by road traffic. The measures included in the soon to be published Sustainable Traffic, Transport and Parking Plan will result in lower emissions from road traffic and the modelling work carried out by Ricardo-AEA will allow the Government to monitor the effectiveness of these measures in reducing air pollution from traffic.

NO. W181 OF 2014

THE HON J J NETTO

Does the Government feel confident that with the introduction of the first Power Purchase Agreement on renewable energy it will be able to produce 15% of its energy from this renewable source by 2020, and if not, how then it intends to meet such a target by 2020?

ANSWER

The Government is not intending the Eco Wave project to be the sole provider of its renewable energy portfolio. Considerable time and resources are being invested into developing a coherent and forward thinking renewable energy strategy. This includes the introduction of wave power but also involves negotiations with other parties for the introduction of other sources of renewable energy. Due to the intermittent nature of renewables and Gibraltar's small size, a mix of energies is likely to provide the best way of producing 15% of its energy from renewables by 2020. The delivery of a holistic renewable energy strategy, taking Gibraltar up to its 2020 targets and beyond, will be accomplished as part of the work of the climate change task force. The Government remains confident that, despite the little progress that had been made prior to 2011, Gibraltar will still be able to meet the EU targets.

WRITTEN

NO. W182 OF 2014

THE HON J J NETTO

Has the Government considered introducing a policy on reducing the age of Government's vehicles in order to reduce the emissions emanating from these more polluting cars, and if so, by when will it intend to introduce such a policy?

ANSWER

The Government has a manifesto commitment to have its transport fleet powered insofar as possible by non-polluting engines. To this end, an assessment of the current fleet is being undertaken with a view to considering options on how best to proceed to meet this commitment.

NO. W183 OF 2014

THE HON J J NETTO

Can the Government provide the total cost of constructing and linking the electricity from the floating buoys to the Gibraltar grid, broken down by each individual component?

ANSWER

The estimated break down of costs to connect the floating buoys to the Low Voltage network is set out below:

Feeder pillar	£17,995
900 meters of 185mm x 2LV cables	£120,000
Termination, joints and fuses	£2,540
Fibre cable, scada connection	£3,890
Smart metering	£1,760
B&CE work	£5,500
Labour	In house, no additional costs

(for connection at the end of the pier)

WRITTEN

NO. W184 OF 2014

THE HON J J NETTO

Further to the answer given to Written Question No 138 of 2014, can the Minister for Health provide Parliament with copies of the H&S reports as asked in the original question?

ANSWER

These are internal working documents so that copies will not be provided.

WRITTEN

NO. W185 OF 2014

THE HON MRS I M ELLUL-HAMMOND

Can the Minister for Health state, from 9 December 2011 to date, broken down by months, how much the GHA has been spent on diagnostic services in Spain for MRIs, broken down by hospital or diagnostic centre?

ANSWER

The cost of MRIs in Spain broken down by diagnostic service centre from 9 December 2011 to date is in the attached schedule.

Answer to Written Question 185/2014

RADIOLOGIA CAMPO DE GIBRALTAR SL	
Dec-11	£27,524.04
Jan-12	£15,754.86
Mar-12	£13,064.05
May-12	£8,517.13
Jul-12	£23,867.18
Aug-12	£18,217.65
Sep-12	£9,734.19
Oct-12	£19,492.54
Nov-12	£50,137.78
Jan-13	£21,492.17
Mar-13	£14,793.80
Apr-13	£30,539.04
May-13	£21,425.92
Jun-13	£23,846.54
Jul-13	£16,731.24
Oct-13	£30,004.47
Nov-13	£30,828.41
Dec-13	£15,004.22
Jan-14	£9,331.30
Feb-14	£19,831.32
Apr-14	£31,317.07

HOSPITAL XANIT INTERNATIONAL	
Jan-12	£1,001.02
Mar-12	£962.83
Apr-12	£1,007.39
May-12	£2,202.91
Jul-12	£4,553.34
Aug-12	£2,463.58
Sep-12	£6,141.39
Dec-12	£4,070.93
May-13	£928.68
Jul-13	£905.78
Aug-13	£255.41
Sep-13	£463.97
Nov-13	£1,113.80
Dec-13	£1,322.20
Feb-14	£1,594.66
May-14	£1,123.76

NO. W186 OF 2014THE HON MRS I M ELLUL-HAMMOND

Can the Minister for Health state, from 9 December 2011 to date, broken down by months, how much the GHA has been spent on diagnostic services in Spain for bone density scans, broken down by hospital or diagnostic centre?

ANSWER

CENTRO DE DIAGNOSTICO CAMPO DE GIBRALTAR	
Dec-11	£2,758.94
Jan-12	£1,141.17
Mar-12	£1,473.10
May-12	£978.79
Jun-12	£1,301.76
Jul-12	£1,649.86
Aug-12	£1,062.41
Sep-12	£1,849.85
Oct-12	£1,312.39
Nov-12	£4,374.47
Jan-13	£2,187.09
Apr-13	£3,061.73
May-13	£758.02
Jun-13	£1,735.03
Jul-13	£1,200.20
Oct-13	£1,641.66
Nov-13	£1,089.93
Dec-13	£717.06
Jan-14	£759.15
Feb-14	£911.20
Apr-14	£1,434.10

NO. W187 OF 2014THE HON MRS I M ELLUL-HAMMOND

Can the Minister for Health state, from 9 December 2011 to date, broken down by months, how much the GHA has been spent on diagnostic services in Spain for PET scans, broken down by hospital or diagnostic centre?

ANSWER

CENTRO ANDALUZ DE DIAGNOSTICO P.E.T., S.A.	
Jan-12	£8,310.77
Feb-12	£3,340.73
Mar-12	£14,162.99
Jun-12	£7,292.34
Jul-12	£6,577.79
Aug-12	£829.10
Sep-12	£4,947.09
Oct-12	£5,775.70
Nov-12	£801.53
Dec-12	£9,866.68
Jan-13	£8,179.76
Mar-13	£9,810.04
May-13	£6,676.49
Jun-13	£6,648.70
Jul-13	£3,352.14
Aug-13	£6,676.49
Oct-13	£2,518.16
Nov-13	£2,490.30
Dec-13	£5,008.44
Jan-14	£4,205.77
Feb-14	£3,313.63
Mar-14	£4,909.54
Apr-14	£4,922.77
Jun-14	£2,415.05

WRITTEN

NO. W188 OF 2014

THE HON MRS I M ELLUL-HAMMOND

Can the Minister for Health state, from 9 December 2011 to date, broken down by months, how much the GHA has been spent on diagnostic services in Spain for ante-natal scans, broken down by hospital or diagnostic centre?

ANSWER

CLINICA GUILLERMO JOSE AZUMENDI PEREZ – GUTTENBERG	
Dec-11	£181.40
Jan-12	£174.03
Feb-12	£618.41
Mar-12	£659.64
Apr-12	£387.54
May-12	£557.21
Jun-12	£712.39
Jul-12	£499.96
Aug-12	£441.60
Sep-12	£1,191.49
Oct-12	£347.11
Nov-12	£204.29
Dec-12	£269.93
Jan-13	£177.14
Feb-13	£112.16
Mar-13	£369.90
Apr-13	£118.10
May-13	£-
Jun-13	£-
Jul-13	£1,012.34
Aug-13	£219.33
Sep-13	£82.69
Oct-13	£595.34
Nov-13	£1,182.41
Dec-13	£793.79
Jan-14	£-
Feb-14	£263.25
Mar-14	£119.60

WRITTEN

NO. W189 OF 2014

THE HON MRS I M ELLUL-HAMMOND

Following on from Question No 369/2014, can the Minister for Health provide, on a confidential basis, the Cancer Registry data for the period 1999 to 2009?

ANSWER

The Gibraltar Health Authority Annual Reports publish information on trends in cancer mortality which forms the basis of advice to the public and government on cancer prevention and on planning cancer services. A computerised cancer registry was set up for collection of data on cancer in 2009 and a project to computerise data from 1999 to 2009 has been completed.

Patient identifiable information from the cancer registry is strictly confidential but summary statistics from the cancer registry will be published in future Annual Reports.

WRITTEN

NO. W190 OF 2014

THE HON MRS I M ELLUL-HAMMOND

Following on from Question No. 377/2014, can the Minister for Health provide, on a confidential basis, the schedule of fixed prices for the different treatments at Xanit hospital?

ANSWER

As stated in my answer to Question 377 of 2014, this information will be provided on a confidential basis on request.

WRITTEN

NO. W191 OF 2014

THE HON MRS I M ELLUL-HAMMOND

Can the Minister for Health provide a breakdown of the various Public Health initiatives during the financial year 2013/2014, the cost involved for each initiative and the name of the entity which helped produce such initiative?

ANSWER

The new public health initiatives in 2013/14 include the introduction of bowel cancer screening for residents aged 60 to 74, promotion of breast feeding in new mothers and promotion of blood donation. Annual initiatives include smoking cessation and sun awareness and cancer risk. There is continuing work around promoting healthy lifestyle such as diet and exercise.

Recent changes to the children's immunisation programme have introduced rotavirus to prevent rotavirus diarrhoea in babies.

These initiatives have all been led within the health authority with support from voluntary sector organisations. Current accounting methods in the public health directorate do not allocate spending by programme or initiative.

NO. W192 OF 2014**THE HON MRS I M ELLUL-HAMMOND**

Can the Minister for Health say how many Full-Time (FTE) nurses have been absent, due to sickness or other, since January 2013, broken down by months?

ANSWER

Month & Year	Full-Time Nurse	Part-Time Nurse	FTE Total:
Jan 2013	152	12	158
Feb 2013	134	6	137
Mar 2013	101	8	105
Apr 2013	110	10	115
May 2013	116	6	119
Jun 2013	96	7	99.5
Jul 2013	112	13	118.5
Aug 2013	105	8	109
Sep 2013	102	10	107
Oct 2013	100	7	103.5
Nov 2013	127	10	132
Dec 2013	109	11	114.5

NO. W193 OF 2014**THE HON MRS I M ELLUL-HAMMOND**

Can the Minister for Health say how many Full-Time (FTE) elderly care nurses have been absent, due to sickness or other, since February 2012, broken down by months?

ANSWER**Elderly Care Nurse Absences due to sickness or other since February 2012**

Month & Year	Full-Time Nurse	Part-Time Nurse	FTE Total:
Jan 2012	55	7	58.5
Feb 2012	55	6	58
Mar 2012	39	9	43.5
Apr 2012	40	6	43
May 2012	51	11	56.5
Jun 2012	52	6	55
Jul 2012	59	8	63
Aug 2012	54	8	58
Sep 2012	47	5	49.5
Oct 2012	52	7	55.5
Nov 2012	45	5	47.5
Dec 2012	70	11	75.5
Jan 2013	75	10	80
Feb 2013	53	9	57.5
Mar 2013	63	8	67
Apr 2013	61	5	63.5
May 2013	65	12	71
Jun 2013	57	8	61

Contd Answer to Written Question 193/2014

Jul 2013	63	7	66.5
Aug 2013	61	9	65.5
Sep 2013	60	9	64.5
Oct 2013	61	9	65.5
Nov 2013	34	2	35
Dec 2013	61	7	64.5

WRITTEN

NO. W194 OF 2014

THE HON MRS I M ELLUL-HAMMOND

Further to Written Question No 124/2014, can the Minister for Health state what the total number of days absence for each Department was for 2012 and 2013, broken down by:

- a) Absence (uncertified)
- b) Short-term illness (1 to 5 days certificated) and
- c) Long-term illness (over 5 days certificated)?

ANSWER

	Year 2012			Year 2013		
	Uncertified	Short-term	Long-term	Uncertified	Short-term	Long-term
Admin & Support	282.5	648.5	848.5	249	708.5	1259.5
Ambulance	54	138.5	69	34	118	176
Industrial	384	993.5	2070.5	645.5	888.5	1994.5
Medical & AHPs	91	252	1262.5	99.5	275	1702
Nursing	770	1560.5	3546	927.5	1862	3885.5

NO. W195 OF 2014**THE HON MRS I M ELLUL-HAMMOND**

Further to Written Question No 129/2014, can the Minister for Health provide, on a yearly basis, the expenses of the GHA, broken down by Department?

ANSWER

	Total Expenditure for the period April 2012 to March 2013	Total Expenditure for the period April 2013 to March 2014
PERSONAL EMOLUMENTS	£	£
SALARIES BASIC	26,055,560	27,770,914
SALARIES OVERTIME	2,812,339	2,940,736
SALARIES ALLOWANCES	5,226,769	5,302,237
SALARIES GRATUITIES	1,555,929	1,385,205
WAGES BASIC	2,289,254	2,314,699
WAGES OVERTIME	925,393	1,133,908
WAGES ALLOWANCES	44,387	53,196
AMBULANCE SERVICE SALARIES BASIC	864,372	870,999
OVERTIME AMBULANCE SERVICE	153,263	187,417
ALLOWANCES AMBULANCE SERVICE	342,992	360,593

Contd Answer to Written Question 195/2014

EMPLOYERS CONTRIBUTION	1,679,179	1,730,784
EMPLOYERS PENSION CONTRIBUTIONS	642,509	912,393
RELIEF COVER	1,578,548	1,649,520
VISITING CONSULTANT	641,425	791,821
RECRUITMENT COSTS	804,225	719,087

RECURRENT EXPENDITURE		
GPMS	10,078,563	11,020,612
DRUGS AND PHARMACEUTICALS	3,489,238	3,573,722
MEDICAL DEPARTMENTS	1,817,857	2,161,847
SURGICAL APPLIANCES	1,207,746	1,286,907
HARDWARE/UNIFORMS/LINEN	419,905	365,645
PATIENTS APPLIANCES	248,013	224,238
DRESSINGS AND ANAESTHESIA	1,248,594	1,235,894
CATERING/PROVISIONS	711,364	733,809
LAUNDRY EXPENSES	502,030	495,429
CLEANING EXPENSES	249,339	234,340
PCC LEASE AND MAINTENANCE	330,835	437,778
MOTOR VEHICLES AND FUEL	286,378	333,017
GENERAL OFFICE EXPENSES	89,497	86,792
ELECTRICITY AND WATER	828,534	919,107

Contd Answer to Written Question 195/2014

TELEPHONE SERVICES	293,340	266,916
PRINTING AND STATIONARY	142,088	85,185
LEGAL FEES	272,654	269,486
OFFICIAL VISITS ABROAD	11,344	18,091
SCHOOL OF HEALTH STUDIES	679,570	550,394
INSURANCE AND CLAIMS	1,100,504	1,215,564
SPONSORED PATIENTS	8,590,078	11,474,163
MISCELLANEOUS EXPENSES	24,061	23,276
REGISTRATION BOARDS	10,531	19,443
REPAIRS AND MAINTENANCE	230,963	171,456
DISPOSAL OF CLINICAL WASTE	1,346,451	1,513,623
HOSPITAL RENT	4,599,280	4,645,276
FACILITIES MANAGEMENT	2,592,730	2,236,317
DIALYSIS EXPENSES	240,246	219,890
EHT (IT) EXPENSES	531,724	461,910
CFB AMBULANCE EXPENSES	87,077	0
IMPREST ACCOUNT	0	0
GHA AMB SERVICES DIRECT EXPENSES	192,924	174,970
EX GRATIA PAYMENTS	60,531	190,649
LOSSES OF PUBLIC FUNDS	9	

Contd Answer to Written Question 195/2014

CAPITAL EXPENDITURE		
MAJOR WORKS	354,838	194,133
NEW EQUIPMENT MEDICAL	919,784	989,889
NEW EQUIPMENT NON MEDICAL	106,870	84,032
FACILITIES MANAGEMENT I&DF	0	0
IMP SUP & DEVELOPMENT I&DF EHT	223,814	353,605
INFRASTRUCTURE & DEVELOPMENT FUND	282,795	235,559
PURCHASES OF AMBULANCES I&DF	283,290	357,263
COLON CANCER INITIATIVE	331,925	0

NO. W196 OF 2014**THE HON MRS I M ELLUL-HAMMOND**

Further to Written Question No 123/2014, can the Minister for Health provide, on a confidential basis, information, inclusive of details of grades and dates, in respect of employees of the Gibraltar Health Authority, since December 2011, who have been:

- (a) retired;
- (b) resigned;
- (c) transferred, and where to and for which task; and
- (d) seconded, and where to and for which task,

either from or into the Gibraltar Health Authority?

ANSWER**RETIREMENTS**

GRADE	MONTH	REASON FOR LEAVING
Enrolled Nurse	Jan-12	Retirement
TSSU/CSSD Technician	Feb-12	Retirement
Administrative Officer	Feb-12	Retirement
Sister/ Charge Nurse	Mar-12	Retirement
Nursing Assistant	Apr-12	Retirement
Typist	Apr-12	Retirement
Enrolled Nurse	May-12	Retirement
Senior Officer	May-12	Retirement
Ward Clerk	Jun-12	Retirement
Registered General Nurse	Aug-12	Retirement
Enrolled Nurse	Sep-12	Retirement
Senior Donor Carer	Nov-12	Retirement
Administrative Officer	Nov-12	Retirement
Administrative Officer	Jan-13	Retirement
Executive Officer	Jan-13	Retirement
Enrolled Nurse	Feb-13	Retirement
Chief Ambulance Officer	Mar-13	Retirement
Nursing Assistant	Mar-13	Retirement

Contd Answer to Written Question 196/2014

General Practitioner	Apr-13	Retirement
Basic Grade Pharmacist	Apr-13	Retirement
Hospital Attendant	Apr-13	Retirement
Nursing Sister	Apr-13	Retirement
Staff Midwife	Apr-13	Retirement
Sister/ Charge Nurse	Apr-13	Retirement
Personal Secretary	Apr-13	Retirement
Senior Enrolled Nurse	May-13	Retirement
Administrative Officer	May-13	Retirement
Typist	May-13	Retirement
Domestic	Jun-13	Retirement
Basic Grade Pharmacist	Jun-13	Retirement
Enrolled Nurse	Jun-13	Retirement
Charge Nurse	Jun-13	Retirement
Nursing Assistant	Aug-13	Retirement
Senior Executive Officer	Aug-13	Retirement
Enrolled Nurse	Sep-13	Retirement
Enrolled Nurse	Sep-13	Retirement
Radiographer/Mammographer	Oct-13	Retirement
Domestic (Part-time)	Oct-13	Retirement
Nursing Assistant (Part-time)	Oct-13	Retirement
Senior Nurse Tutor	Nov-13	Retirement
Nursing Auxiliary	Nov-13	Retirement
Registered General Nurse	Dec-13	Retirement
Domestic	Jan-14	Retirement
Nursing Assistant	Jan-14	Retirement
Labourer	Jan-14	Retirement
Sister/ Charge Nurse	Jan-14	Retirement
JMLSO	Feb-14	Retirement
Administrative officer	Feb-14	Retirement
Staff Midwife	Feb-14	Retirement
Nursing Assistant	Mar-14	Retirement
Enrolled Nurse	Mar-14	Retirement
Personal Secretary	Mar-14	Retirement
RGN	Apr-14	Retirement
Nursing Assistant	Apr-14	Retirement
Nursing Assistant	Apr-14	Retirement
Charge Nurse	May-14	Retirement
Nursing Assistant	May-14	Retirement
Nursing Assistant	May-14	Retirement

Contd Answer to Written Question 196/2014**RESIGNATIONS**

GRADE	MONTH	REASON FOR LEAVING
Staff Midwife	Dec-11	Resignation
NCHD	Dec-11	Resignation
Nursing Assistant	Dec-11	Resignation
Administrative Officer	Jan-12	Resignation
Nurse Practitioner	Jan-12	Resignation
Consultant	Feb-12	Resignation
Occupational Therapist Sen I	Feb-12	Resignation
Nursing Assistant	Feb-12	Resignation
Registered General Nurse	Feb-12	Resignation
Registered General Nurse	Mar-12	Resignation
Occupational Therapist Senior II	Apr-12	Resignation
Staff Midwife	Apr-12	Resignation
Administrative Officer	May-12	Resignation
Operating Department Practitioner	Jun-12	Resignation
Registered General Nurse	Jun-12	Resignation
Nursing Assistant	Jun-12	Resignation
Nursing Assistant	Jul-12	Resignation
Registered General Nurse	Jul-12	Resignation
Physiotherapist Senior II	Jul-12	Resignation
Administrative Officer	Jul-12	Resignation
Registered General Nurse	Aug-12	Resignation
Nursing Assistant	Sep-12	Resignation
Senior Officer	Sep-12	Resignation
Ward Clerk	Sep-12	Resignation
Registered General Nurse	Sep-12	Resignation
Occupational Therapy Helper	Sep-12	Resignation
Nursing Assistant	Sep-12	Resignation
Nursing Assistant	Sep-12	Resignation
Nursing Assistant	Sep-12	Resignation
Registered General Nurse	Sep-12	Resignation
Registered General Nurse	Sep-12	Resignation
Sister/Charge Nurse	Oct-12	Resignation
GHA Clerk	Oct-12	Resignation
Staff Midwife	Oct-12	Resignation
Registered General Nurse	Oct-12	Resignation
Registered General Nurse	Oct-12	Resignation
Nursing Assistant	Nov-12	Resignation
Registered General Nurse	Dec-12	Resignation
Registered General Nurse	Dec-12	Resignation
Registered General Nurse	Feb-13	Resignation
Palliative Care Nurse Specialist	Apr-13	Resignation

Contd Answer to Written Question 196/2014

Administrative Officer	Apr-13	Resignation
Nursing Assistant	Apr-13	Resignation
Registered General Nurse	Jun-13	Resignation
GHA Clerk	Jun-13	Resignation
Registered Mental Nurse	Jun-13	Resignation
GHA Clerk	Jun-13	Resignation
GHA Clerk	Jun-13	Resignation
Administrative Officer	Jun-13	Resignation
Technical Instructor	Jul-13	Resignation
Registered Mental Nurse	Jul-13	Resignation
Clinical Psychologist	Jul-13	Resignation
NCHD	Aug-13	Resignation
Registered General Nurse	Aug-13	Resignation
Nurse Practitioner	Sep-13	Resignation
Physiotherapy Assistant	Sep-13	Resignation
Principal Nurse Lecturer	Sep-13	Resignation
Registered Mental Nurse	Oct-13	Resignation
Staff Nurse	Nov-13	Resignation
Registered General Nurse	Nov-13	Resignation
Ambulance Care Assistant	Nov-13	Resignation
Registered General Nurse	Dec-13	Resignation
Registered General Nurse	Dec-13	Resignation
Staff Midwife	Feb-14	Resignation
Bank Nursing Assistant	Feb-14	Resignation
Nursing Assistant	Apr-14	Resignation
Nursing Assistant	Apr-14	Resignation
Registered General Nurse	Apr-14	Resignation
Radiographer Senior I	May-14	Resignation

TRANSFERS OUT OF THE GHA

GRADE	MONTH	TRANSFERRED TO
Higher Exec Officer	Jan-12	DTI
Administrative Officer	Jan-12	Human Resources
Administrative Officer	Feb-12	Transfer
Administrative Officer	Mar-12	Post Office
Administrative Officer	Mar-12	Human Resources
Administrative Officer	Mar-12	Parliament
Personal Secretary	Jun-12	Human Resources

Contd Answer to Written Question 196/2014

GHA Clerk	Jul-12	No 6
Executive Officer	Oct-12	Procurement
Administrative Officer	Nov-12	Shipping Registry
Administrative Officer	Feb-13	Human Resources
Technical Instructor	Jul-13	GDC
Administrative Officer	Apr-14	Post Office
Administrative Officer	Jan-13	Education Department
Labourer	Jan-13	Tourist Board
Hospital Attendant	Feb-13	Bailiff
Administrative Officer	Apr-13	ETB
Administrative Officer	Apr-13	Post Office
Administrative Officer	Oct-13	Treasury
Executive Officer	Oct-13	Supreme Court
Administrative Officer	Jan-14	Income Tax
Higher Exec Officer	Jan-14	Income Tax

TRANSFERS INTO THE GHA

GRADE	MONTH	TRANSFERRED FROM
Administrative Officer	Jan-12	Building and Works
Senior Executive Officer	Jan-12	Environment
Administrative Officer	Jan-12	Maritime Administration
Administrative Officer	May-12	Sup[reme Court
Medical Secretary	Jun-12	Social Services
Medical Secretary	Jul-12	Police
Administrative Officer	Feb-13	Environment
Administrative Officer	Mar-13	Police
Hospital Attendant	Aug-13	Sports Authority
Higher Executive Officer	Aug-13	Supreme Court
Higher Executive Officer	Aug-13	Shipping Registry
Administrative Officer	Oct-13	Treasury
Executive Officer	Nov-13	Post Office
Senior Executive Officer	Jan-14	Police
Administrative Officer	Mar-14	Treasury
Typist	Sep-13	Technical Services

SECONDMENTS

GRADE	MONTH	SECONDED TO
Charge Nurse	Feb-13	Elderly Care Agency
Registered General Nurse	Aug-13	Elderly Care Agency

WRITTEN

NO. W197 OF 2014

THE HON MRS I M ELLUL-HAMMOND

Can the Minister for Health provide information, broken down by medical & allied professions, nursing or administrative & support, the number of employees of the Gibraltar Health Authority, since December 2011, who have been:

- (a) retired;
- (b) resigned;
- (c) transferred, and where to and for which task; and
- (d) seconded, and where to and for which task,

either from or into the Gibraltar Health Authority?

ANSWER

	Retired	Resigned	Transferred Out	Transferred In	Seconded
Meds & PAMS	4	11	0	0	0
Nursing	33	46	0	0	2 to ECA
Admin & Support	21	12	22 (i)	16 (ii)	0

NO. W198 OF 2014

THE HON MRS I M ELLUL-HAMMOND

Can the Minister for Health state, what the full-time working pattern as a total number of days a year is for:

- (a) Medical grades, broken down by GPs and Consultants;
- (b) AHPs, broken down by different AHP area;
- (c) Nursing grades;
- (d) ECA;
- (e) Ambulance;
- (f) Administrative & support staff?

ANSWER

- (a) 260 days per year, less 12 days public holidays plus on-call days according to contract.
- (b) 260 days per year, less 12 days public holidays plus on call days according to contract .
- (c) 260 days per year, in shift rotation.
- (d) 260 days per year, in shift rotation.
- (e) 260 days per year, in shift rotation, plus on-call days according to contract.
- (f) 260 days per year, less 12 days public holidays.

NO. W199 OF 2014

THE HON MRS I M ELLUL-HAMMOND

Can the Minister for Health provide a list of hospitals, outside of Gibraltar, that the GHA has a 'service level agreement' with?

ANSWER

GHA holds SLAs with the following hospitals:

UK

1. Great Ormond Street.
2. Guys & St Thomas.
3. Imperial (formerly Hammersmith and St Mary's).
4. Moorfields.
5. Royal Brompton.
6. Royal Marsden.
7. South London and Maudsley.
8. University College London.
9. National Poison Service.

Spain

1. Xanit.

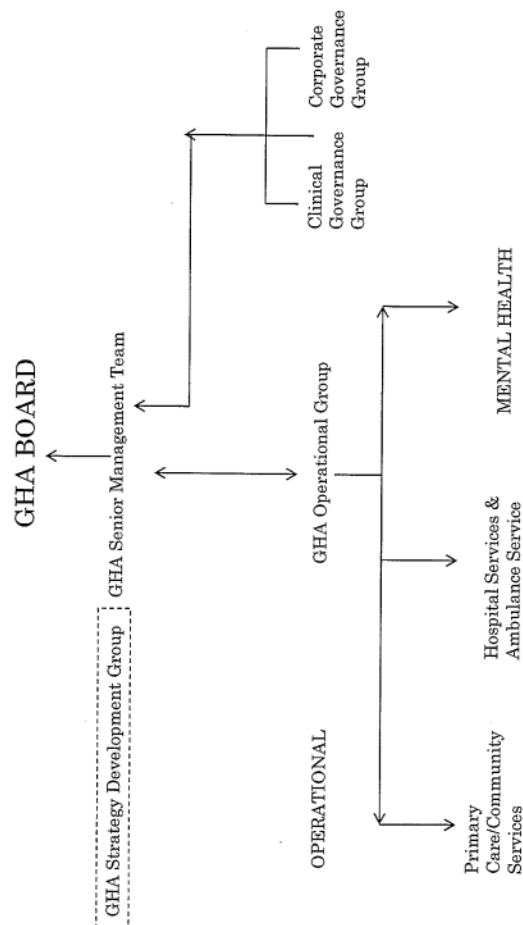
NO. W200 OF 2014

THE HON MRS I M ELLUL-HAMMOND

Can the Minister for Health provide a diagrammatic flow chart of the GHA's new management system?

ANSWER

The chart is attached:



NO. W201 OF 2014THE HON MRS I M ELLUL-HAMMOND

Can the Minister for Social Services state, from December 2011 to date, how many people are receiving domiciliary care, broken down by months?

ANSWER

December 2011	-	75
January 2012	-	75
February 2012	-	78
March 2012	-	88
April 2012	-	83
May 2012	-	85
June 2012	-	101
July 2012	-	124
August 2012	-	111
September 2012	-	110
October 2012	-	113
November 2012	-	114
December 2012	-	115
January 2013	-	113
February 2013	-	108
March 2013	-	119
April 2013	-	126
May 2013	-	136
June 2013	-	168
July 2013	-	152
August 2013	-	164
September 2013	-	173
October 2013	-	182
November 2013	-	189
December 2013	-	197
January 2014	-	208
February 2014	-	211
March 2014	-	218
April 2014	-	224
May 2014	-	225
June 2014	-	224

NO. W202 OF 2014THE HON MRS I M ELLUL-HAMMOND

Can the Minister for Social Services state, from December 2011 to date, how many people are on the waiting list for domiciliary care, broken down by months?

ANSWER

Dec-11	-	309
Jan-12	-	309
Feb-12	-	319
Mar-12	-	327
Apr-12	-	325
May-12	-	302
Jun-12	-	290
Jul-12	-	275
Aug-12	-	244
Sep-12	-	109
Oct-12	-	90
Nov-12	-	11
Dec-12	-	nil
Jan-13	-	nil
Feb-13	-	nil
Mar-13	-	nil
Apr-13	-	nil
May-13	-	nil
Jun-13	-	nil
Jul-13	-	nil
Aug-13	-	nil
Sep-13	-	nil
Oct-13	-	nil
Nov-13	-	nil
Dec-13	-	nil
Jan-14	-	nil
Feb-14	-	nil
Mar-14	-	nil
Apr-14	-	nil
May-14	-	nil

NO. W203 OF 2014THE HON MRS I M ELLUL-HAMMOND

Can the Minister for Social Services state, from December 2011 to date, how much has been spent on domiciliary care, broken down by months?

ANSWER

Dec'11	£127,002.68	Oct'13	£187,711.64
Jan'12	£60,262.56	Nov'13	£403,472.47
Feb'12	£60,663.28	Dec'13	£87,970.80
Mar'12	£62,196.79	Jan'14	£120,915.90
Apr'12	£84,978.24	Feb'14	£412,388.87
May'12	£82,022.69	Mar'14	£288,556.84
Jun'12	£89,527.84	Apr'14	£38,571.44
Jul'12	£101,816.61	May'14	£165,054.61
Aug'12	£106,892.68	Jun'14	£76,581.53
Sep'12	£102,254.63		
Oct'12	£108,259.13		
Nov'12	£109,885.13		
Dec'12	£108,352.13		
Jan'13	£105,836.90		
Feb'13	£100,956.36		
Mar'13	£132,463.86		
Apr'13	£124,375.92		
May'13	£116,254.31		
Jun'13	£21,171.56		
Jul'13	£146,892.61		
Aug'13	£166,366.16		
Sep'13	£146,444.67		

WRITTEN

NO. W204 OF 2014

THE HON MRS I M ELLUL-HAMMOND

Further to Government press release 138/2014 and Written Question No. 141/2014, can the Minister for Social Services list the 610 bodies in the Establishment for the Care Agency and the Equality & Social Services Department, giving the total number for each grade, position, service, industrial and GDC staff, broken down by full time, part time, job sharing and full time equivalent?

ANSWER

As mentioned last month the 610 posts are bodies in employment. A list of all the posts can be found in the Estimates of Revenue & Expenditure Book 2013/2014.

WRITTEN

NO. W205 OF 2014

THE HON MRS I M ELLUL-HAMMOND

Can the Minister for the Elderly say how many residential beds are and will be provided for the Elderly in care facilities, broken down by?

- (a) Mount Alvernia;
- (b) Jewish Home;
- (c) John Mackintosh Home;
- (d) John Cochrane Ward;
- (e) Calpe Ward; and
- (f) New Alzheimer & Dementia facility at the former RNH site?

ANSWER

- (a) 143.
- (b) 12.
- (c) 54.
- (d) 32.
- (e) 19.
- (f) 54.

NO. W206 OF 2014

THE HON MRS I M ELLUL-HAMMOND

Can the Minister for Social Services state how many beds are available at the John Mackintosh Home, broken down by:

- (a) Elderly residential for those not mobile or independent;
- (b) Semi independent flats for mobile elderly;
- (c) Alzheimer & dementia patients;
- (d) Sheltered accommodation for younger patients with debilitating mobility issues; and
- (e) Other criteria, stating what, if any?

ANSWER

There are no semi independent flats for mobile elderly or sheltered accommodation for younger patients with debilitating mobility issues at John Mackintosh Home. The criteria for bed occupancy at the John Mackintosh Home is low to medium dependency.

NO. W207 OF 2014

THE HON D J BOSSINO

Can the Minister for Employment please provide the following details in respect of each month, since February 2012 and in respect of each of Construction Training Company Limited, ETCL, Graduate Research Development Company Limited and STCL.:

- (a) The number of trainees as at the start of each month;
- (b) The number of trainees starting during course of each month;
- (c) The number of trainees leaving on securing employment with the placement provider;
- (d) The number of trainees leaving without securing employment with the placement provider;
- (e) The number of trainees leaving for any other reason; and
- (f) The number of trainees as at end of each month?

ANSWER

Company 1	
Month 1	0
Month 2	0
Month 3	0
Month 4	0
Month 5	0
Month 6	0
Month 7	0
Month 8	0
Month 9	0
Month 10	58
Month 11	77
Month 12	90
Month 13	118
Month 14	185
Month 15	183
Month 16	174
Month 17	160

Month 18	160
Month 19	156
Month 20	147
Month 21	143
Month 22	153
Month 23	153
Month 24	137
Month 25	134
Month 26	145
Month 27	121

Company 2

Month 1	296
Month 2	358
Month 3	404
Month 4	460
Month 5	516
Month 6	551
Month 7	529
Month 8	539
Month 9	521
Month 10	534
Month 11	507
Month 12	486
Month 13	389
Month 14	296
Month 15	290
Month 16	298
Month 17	283
Month 18	253
Month 19	231
Month 20	232
Month 21	227
Month 22	211
Month 23	197
Month 24	173
Month 25	155
Month 26	151
Month 27	151

Company 3

Month 1	11
Month 2	11
Month 3	24
Month 4	30
Month 5	44
Month 6	47
Month 7	50
Month 8	59
Month 9	56
Month 10	62
Month 11	63
Month 12	63
Month 13	64
Month 14	67
Month 15	66
Month 16	58
Month 17	52
Month 18	53
Month 19	55
Month 20	59
Month 21	70
Month 22	76
Month 23	79
Month 24	79
Month 25	79
Month 26	73
Month 27	70

Company 4

Month 1	0
Month 2	0
Month 3	0
Month 4	0
Month 5	0
Month 6	0
Month 7	46
Month 8	46
Month 9	47
Month 10	61
Month 11	64
Month 12	65
Month 13	68
Month 14	69
Month 15	69

Month 16	73
Month 17	73
Month 18	75
Month 19	76
Month 20	75
Month 21	76
Month 22	76
Month 23	75
Month 24	77
Month 25	77
Month 26	76
Month 27	75

The number of trainees starting during the course of each month was as follows:

Company 1	
Month 1	0
Month 2	0
Month 3	0
Month 4	0
Month 5	0
Month 6	0
Month 7	0
Month 8	0
Month 9	58
Month 10	20
Month 11	13
Month 12	28
Month 13	67
Month 14	12
Month 15	9
Month 16	8
Month 17	13
Month 18	15
Month 19	4
Month 20	6
Month 21	28
Month 22	13
Month 23	8
Month 24	27
Month 25	31
Month 26	9
Month 27	11

Company 2

Month 1	65
Month 2	48
Month 3	63
Month 4	60
Month 5	41
Month 6	24
Month 7	22
Month 8	13
Month 9	79
Month 10	12
Month 11	8
Month 12	6
Month 13	67
Month 14	25
Month 15	29
Month 16	18
Month 17	20
Month 18	16
Month 19	29
Month 20	29
Month 21	22
Month 22	33
Month 23	10
Month 24	68
Month 25	46
Month 26	57
Month 27	21

Company 3

Month 1	2
Month 2	13
Month 3	7
Month 4	14
Month 5	4
Month 6	5
Month 7	10
Month 8	4
Month 9	8
Month 10	2
Month 11	3
Month 12	12
Month 13	5
Month 14	3

Month 15	3
Month 16	3
Month 17	2
Month 18	10
Month 19	7
Month 20	16
Month 21	8
Month 22	6
Month 23	1
Month 24	5
Month 25	0
Month 26	1
Month 27	0

Company 4

Month 1	0
Month 2	0
Month 3	0
Month 4	0
Month 5	0
Month 6	46
Month 7	0
Month 8	1
Month 9	14
Month 10	3
Month 11	1
Month 12	4
Month 13	1
Month 14	1
Month 15	4
Month 16	3
Month 17	2
Month 18	2
Month 19	0
Month 20	2
Month 21	0
Month 22	0
Month 23	2
Month 24	0
Month 25	0
Month 26	1
Month 27	0

The number of former trainees employed with the placement providers was as follows:

Company 1	
Month 1	0
Month 2	0
Month 3	0
Month 4	0
Month 5	0
Month 6	0
Month 7	0
Month 8	0
Month 9	0
Month 10	0
Month 11	0
Month 12	0
Month 13	0
Month 14	14
Month 15	18
Month 16	12
Month 17	13
Month 18	19
Month 19	13
Month 20	6
Month 21	14
Month 22	8
Month 23	20
Month 24	29
Month 25	19
Month 26	23
Month 27	9
Company 2	
Month 1	3
Month 2	2
Month 3	7
Month 4	4
Month 5	6
Month 6	0
Month 7	5
Month 8	9
Month 9	8
Month 10	30
Month 11	6
Month 12	50

Month 13	93
Month 14	20
Month 15	15
Month 16	21
Month 17	25
Month 18	19
Month 19	26
Month 20	30
Month 21	33
Month 22	30
Month 23	30
Month 24	22
Month 25	29
Month 26	25
Month 27	10

Company 3

Month 1	0
Month 2	0
Month 3	0
Month 4	0
Month 5	0
Month 6	0
Month 7	0
Month 8	2
Month 9	1
Month 10	0
Month 11	3
Month 12	8
Month 13	1
Month 14	2
Month 15	11
Month 16	3
Month 17	1
Month 18	5
Month 19	1
Month 20	3
Month 21	1
Month 22	0
Month 23	0
Month 24	4
Month 25	2
Month 26	0
Month 27	5

Company 4	
Month 1	0
Month 2	0
Month 3	0
Month 4	0
Month 5	0
Month 6	0
Month 7	0
Month 8	0
Month 9	0
Month 10	0
Month 11	0
Month 12	0
Month 13	0
Month 14	0
Month 15	0
Month 16	0
Month 17	0
Month 18	0
Month 19	0
Month 20	0
Month 21	0
Month 22	0
Month 23	0
Month 24	0
Month 25	0
Month 26	0
Month 27	0

The number of former trainees employed other than by the placement provider was as follows:

Company 1	
Month 1	0
Month 2	0
Month 3	0
Month 4	0
Month 5	0
Month 6	0
Month 7	0
Month 8	0
Month 9	0
Month 10	0
Month 11	0

Month 12	0
Month 13	0
Month 14	0
Month 15	0
Month 16	0
Month 17	0
Month 18	0
Month 19	0
Month 20	0
Month 21	4
Month 22	2
Month 23	2
Month 24	1
Month 25	0
Month 26	2
Month 27	0

Company 2

Month 1	0
Month 2	0
Month 3	0
Month 4	0
Month 5	0
Month 6	46
Month 7	0
Month 8	0
Month 9	58
Month 10	5
Month 11	0
Month 12	11
Month 13	67
Month 14	9
Month 15	3
Month 16	5
Month 17	20
Month 18	10
Month 19	2
Month 20	0
Month 21	2
Month 22	2
Month 23	1
Month 24	0
Month 25	1
Month 26	4
Month 27	3

Company 3

Month 1	2
Month 2	0
Month 3	1
Month 4	0
Month 5	1
Month 6	2
Month 7	1
Month 8	3
Month 9	1
Month 10	1
Month 11	0
Month 12	3
Month 13	1
Month 14	2
Month 15	0
Month 16	6
Month 17	0
Month 18	1
Month 19	1
Month 20	1
Month 21	1
Month 22	1
Month 23	0
Month 24	1
Month 25	4
Month 26	4
Month 27	1

Company 4

Month 1	0
Month 2	0
Month 3	0
Month 4	0
Month 5	0
Month 6	0
Month 7	0
Month 8	0
Month 9	0
Month 10	0
Month 11	0
Month 12	0
Month 13	0
Month 14	0

Month 15	0
Month 16	0
Month 17	0
Month 18	0
Month 19	0
Month 20	0
Month 21	0
Month 22	1
Month 23	0
Month 24	0
Month 25	1
Month 26	2
Month 27	1

The number of trainees leaving the companies for other reasons was as follows:

Company 1	
Month 1	0
Month 2	0
Month 3	0
Month 4	0
Month 5	0
Month 6	0
Month 7	0
Month 8	0
Month 9	0
Month 10	1
Month 11	0
Month 12	0
Month 13	0
Month 14	0
Month 15	0
Month 16	10
Month 17	0
Month 18	0
Month 19	0
Month 20	4
Month 21	0
Month 22	3
Month 23	2
Month 24	0
Month 25	1
Month 26	8
Month 27	5

Company 2

Month 1	0
Month 2	0
Month 3	0
Month 4	0
Month 5	0
Month 6	0
Month 7	7
Month 8	22
Month 9	0
Month 10	4
Month 11	10
Month 12	42
Month 13	0
Month 14	2
Month 15	3
Month 16	7
Month 17	5
Month 18	9
Month 19	0
Month 20	4
Month 21	3
Month 22	15
Month 23	3
Month 24	64
Month 25	20
Month 26	28
Month 27	44

Company 3

Month 1	0
Month 2	0
Month 3	0
Month 4	0
Month 5	0
Month 6	0
Month 7	0
Month 8	2
Month 9	0
Month 10	0
Month 11	0
Month 12	0
Month 13	0

Month 14	0
Month 15	0
Month 16	0
Month 17	0
Month 18	2
Month 19	1
Month 20	1
Month 21	0
Month 22	2
Month 23	1
Month 24	0
Month 25	0
Month 26	0
Month 27	0

Company 4

Month 1	0
Month 2	0
Month 3	0
Month 4	0
Month 5	0
Month 6	0
Month 7	0
Month 8	0
Month 9	0
Month 10	0
Month 11	0
Month 12	1
Month 13	0
Month 14	1
Month 15	0
Month 16	3
Month 17	0
Month 18	1
Month 19	1
Month 20	1
Month 21	0
Month 22	0
Month 23	0
Month 24	0
Month 25	0
Month 26	0
Month 27	0

At the end of each month, the number of trainees in each company was as follows:

Company 1	
Month 1	0
Month 2	0
Month 3	0
Month 4	0
Month 5	0
Month 6	0
Month 7	0
Month 8	0
Month 9	58
Month 10	77
Month 11	90
Month 12	118
Month 13	185
Month 14	183
Month 15	174
Month 16	160
Month 17	160
Month 18	156
Month 19	147
Month 20	143
Month 21	153
Month 22	153
Month 23	137
Month 24	134
Month 25	145
Month 26	121
Month 27	118

Company 2	
Month 1	358
Month 2	404
Month 3	460
Month 4	516
Month 5	551
Month 6	529
Month 7	539
Month 8	521
Month 9	534
Month 10	507
Month 11	486
Month 12	389

Month 13	296
Month 14	290
Month 15	298
Month 16	283
Month 17	253
Month 18	231
Month 19	232
Month 20	227
Month 21	211
Month 22	197
Month 23	173
Month 24	155
Month 25	151
Month 26	151
Month 27	115

Company 3

Month 1	11
Month 2	24
Month 3	30
Month 4	44
Month 5	47
Month 6	50
Month 7	59
Month 8	56
Month 9	62
Month 10	63
Month 11	63
Month 12	64
Month 13	67
Month 14	66
Month 15	58
Month 16	52
Month 17	53
Month 18	55
Month 19	59
Month 20	70
Month 21	76
Month 22	79
Month 23	79
Month 24	79
Month 25	73
Month 26	70
Month 27	64

Company 4

Month 1	0
Month 2	0
Month 3	0
Month 4	0
Month 5	0
Month 6	46
Month 7	46
Month 8	47
Month 9	61
Month 10	64
Month 11	65
Month 12	68
Month 13	69
Month 14	69
Month 15	73
Month 16	73
Month 17	75
Month 18	76
Month 19	75
Month 20	76
Month 21	76
Month 22	75
Month 23	77
Month 24	77
Month 25	76
Month 26	75
Month 27	74

NO. W208 OF 2014**THE HON D J BOSSINO**

Given the failure to provide the information first sought in Question 329/2014, can the Minister for Employment now provide details of the number of private employers (broken down by industry group) which have employed FJS trainees, with details of how many trainees have been employed by each employer, broken down by month, since February 2012 to date?

ANSWER

The Government does not accept that it failed to give the information requested in Question 329/14. This Question was answered by providing information on trainees with private sector employers on the same basis as Question 403/14, which had been drafted by the Hon. Member in the same way, and about which answer he raised no issue. Furthermore, the present Question seeks information not previously asked.

The number of private employers who have employed former trainees, from February 2012 to April 2014 by industry area, is as follows:

Sectors	No of Companies
Electricity Supply	2
Water Supply	0
Shipbuilding etc.	1
Other Manufacture	3
Construction	98
Wholesale Trade	11
Retail Trade	45
Hotel Trade	6
Restaurants, Bars, etc.	21
Repairs of Consumer Goods	15
Sea Transport & Related Services	6
Air Transport & Related Services	0
Road Transport (Incl Taxis, Buses, Lorries, etc.)	10
Post & Communication	8
Banking, Finance & Insurance	19

Police & Fire Service (Security)	7
Sanitary Services	2
Education	13
Mental & Health Services	4
Other Services	<u>107</u>

The number of former trainees employed in the private sector from February 2012 to April 2014 is as follows:

	Employers	Employees
Month 1	3	1
Month 2	2	1
Month 3	7	1
Month 4	4	1
Month 5	6	1
Month 6	5	1
Month 7	5	1
Month 8	5	1
Month 9	8	1
Month 10	1	1
Month 11	4	1
Month 12	49	1
	1	2
Month 13	69	1
	1	3
Month 14	63	1
	1	2
Month 15	56	1
	2	2
Month 16	52	1
	2	2

Month 17	40 6	1 2
Month 18	37 3	1 2
Month 19	30 4 1	1 2 3
Month 20	30 3	1 2
Month 21	40 2	1 2
Month 22	39 1	1 2
Month 23	40 1	1 6
Month 24	44 1	1 4
Month 25	11 7 1	1 2 4
Month 26	16 3 2 1	1 2 3 4
Month 27	12 1 1	1 2 4

WRITTEN

NO. W209 OF 2014

THE HON D A FEETHAM

Can the Government please state how much it pays Michael Llamas and/or any company associated with him in respect of his services and/or the services of that company to the Government of Gibraltar?

ANSWER

Exactly the same as was agreed by members opposite when they were in Government, subject to agreed increases for inflation, as provided for in the said agreement.