

Air Traffic Survey 2016



Statistics Office
HM Government of Gibraltar



Statistics Office

HM Government of Gibraltar

AIR TRAFFIC SURVEY 2016



Statistics Office
HM Government of Gibraltar

Statistics Online

Copies of the Air Traffic Survey can be obtained, free of charge from the Statistics Office and are also available for download from the Gibraltar Government Website (<http://www.gibraltar.gov.gi/new/downloads>).

Historical data can be downloaded from previous copies of the report available on-line.

Comments and requests for general information should be addressed to:

Statistics Office
99 Harbours Walk
The New Harbours
Or

E-mail: statistics@gibraltar.gov.gi

Tel: +350 20075515 / +350 20075490 / +350 20052541

Fax: +350 20051160

PREFACE

The Statistics (Air Traffic Survey) Order 1971 requires that the Government Statistician prepare a report and summary of the findings of the Air Traffic Survey to be laid before the Gibraltar Parliament.

This report contains statistical data on air traffic operations between Gibraltar and other destinations for both scheduled and charter airlines for the years 1992 to 2016. It also includes some general data on commercial freight and on the number of flights arriving in Gibraltar.

I must express my thanks to the Gibraltar Air Terminal Ltd and Borders and Coastguard Agency for their continued co-operation in the conduct of this Survey.

GOVERNMENT STATISTICIAN

DEFINITIONS AND NOTES

- (a) Passenger Load Factor:
$$\frac{\text{All seats used}}{\text{All seats offered (less in-transits)}} \times 100$$
- (b) Revenue Load Factor:
$$\frac{\text{All seats used by "paying" passengers}}{\text{All seats offered (less in-transits)}} \times 100$$
- (c) Scheduled Flights: are regular flights planned according to a published timetable, including those supplementary thereto, and available for use by members of the public.
- (d) Charter Flights: includes flights carrying 10 or more passengers, other than scheduled services and Ministry of Defence
- (e) In interpreting the figures it should be noted that:
- (i) Flights to and from Manchester re-commenced in September 2008.
 - (ii) Flights to and from Heathrow re-commenced in October 2009.
 - (iii) Flights to and from Gatwick were reduced from 13 to 7 a week as from October 2009.
 - (iv) Flights to and from Madrid re-commenced in April 2009 and ended in March 2010.
 - (v) Flights to and from Liverpool commenced in March 2011 and ended in October 2012.
 - (vi) Flights to and from East Midlands commenced in March 2012 and ended in September 2012.
 - (vii) Flights to and from Birmingham commenced in March 2013.
 - (viii) Flights to and from Marrakech commenced in April 2014 and ended in July 2014.
 - (ix) Flights to and from Tangier commenced in March 2015.
 - (x) Flights to and from Bristol commenced in April 2015.
 - (xi) Flights to and from Gatwick increased by 4 flights a week in May 2016.
 - (xii) Flights to and from Manchester increased by 2 flights a week in July 2016.
 - (xiii) Passenger load factors are calculated on the basis of actual figures and exclude passengers on connecting flights when applicable.
 - (xiv) Revenue load factors are calculated in the same way as passenger load factors except they exclude non-paying passengers.
 - (xv) Charter flights as from 1998 include all destinations.
 - (xvi) No Charter operations were recorded during 1993 - 1997, 2008, 2011 - 2013.
 - (xvii) The yearly totals have been rounded off from the actual figure and need not necessarily equal the sum of the rounded off sub-totals.

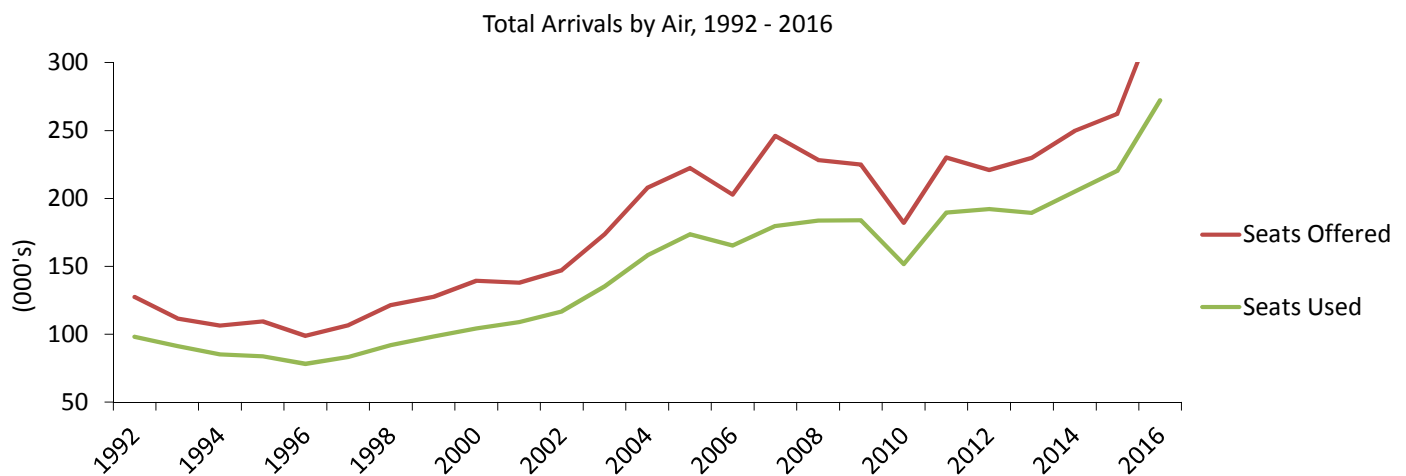
Contents

Tables		Page
1.	Arrivals and Departures by Air	
1.01	Arrivals/Departures by Air, 1992 - 2016	1
2.	Arrivals by Air (Scheduled Flights)	
2.01	Arrivals by Air from U.K., 1992 - 1995	2
2.02	Arrivals by Air from U.K., 1996 - 1999	2
2.03	Arrivals by Air from U.K., 2000 - 2003	3
2.04	Arrivals by Air from U.K., 2004 - 2007	3
2.05	Arrivals by Air from U.K., 2008 - 2010	4
2.06	Arrivals by Air from U.K., 2011 - 2013	4
2.07	Arrivals by Air from U.K., 2014 - 2016	5
2.08	Arrivals by Air from Spain, 2008 - 2010	6
2.09	Arrivals by Air from Tangier, 2015 - 2016	7
3.	Departures by Air (Scheduled Flights)	
3.01	Departures by Air to U.K., 1992 - 1994	8
3.02	Departures by Air to U.K., 1995 - 1997	8
3.03	Departures by Air to U.K., 1998 - 2000	9
3.04	Departures by Air to U.K., 2001 - 2003	9
3.05	Departures by Air to U.K., 2004 - 2006	10
3.06	Departures by Air to U.K., 2007 - 2009	10
3.07	Departures by Air to U.K., 2010 - 2011	11
3.08	Departures by Air to U.K., 2012 - 2013	11
3.09	Departures by Air to U.K., 2014 - 2016	12
3.10	Departures by Air to Spain, 2008 - 2010	13
3.11	Departures by Air to Tangier, 2015 - 2016	14
4.	Arrivals by Air (Charter Flights)	
4.01	Arrivals by Air, 2001 - 2003	15
4.02	Arrivals by Air, 2004 - 2006	15
4.03	Arrivals by Air, 2007, 2009 - 2010	16
4.04	Arrivals by Air, 2014 - 2016	16
5.	Departures by Air (Charter Flights)	
5.01	Departures by Air, 2001 - 2003	17
5.02	Departures by Air, 2004 - 2006	17
5.03	Departures by Air, 2007, 2009 - 2010	18
5.04	Departures by Air, 2014 - 2016	18
6.	Aircraft Arrivals	
6.01	Aircraft Arrivals, 2009 - 2016	19
7.	Commercial Freight	
7.01	Set Down and Picked Up by Air, Gibraltar, 1992 - 2016	20

1: Arrivals and Departures by Air

Table 1.01 Arrivals/Departures by Air, 1992 - 2016

Year	Arrivals (000's)						Departures (000's)					
	Total		Scheduled		Charter		Total		Scheduled		Charter	
	Seats Offered	Seats Used	Seats Offered	Seats Used	Seats Offered	Seats Used	Seats Offered	Seats Used	Seats Offered	Seats Used	Seats Offered	Seats Used
1992	127.4	98.1	127.0	97.7	0.4	0.4	128.2	101.0	127.7	100.5	0.5	0.4
1993	111.5	91.3	111.4	91.2	0.1	0.1	112.2	93.3	112.2	93.3	-	-
1994	106.4	85.2	106.4	85.2	-	-	107.1	86.9	207.2	86.9	-	-
1995	109.4	83.8	109.4	83.8	-	-	109.5	85.3	109.5	85.3	-	-
1996	98.7	78.1	98.7	78.1	-	-	98.1	78.2	98.1	78.2	-	-
1997	106.6	83.2	106.6	83.2	-	-	104.4	81.5	104.4	81.5	-	-
1998	121.5	92.0	120.4	91.0	1.2	1.1	120.2	91.0	119.0	90.1	1.2	0.9
1999	127.5	98.3	126.5	97.8	1.0	0.5	127.5	97.9	126.5	97.4	1.0	0.5
2000	139.4	104.3	138.6	103.7	0.8	0.5	138.9	107.1	138.1	106.6	0.8	0.5
2001	138.0	109.0	137.7	108.8	0.3	0.2	138.2	110.6	137.9	110.5	0.4	0.2
2002	147.2	116.6	146.3	115.7	0.9	0.9	147.0	114.8	146.1	114.0	0.9	0.9
2003	173.5	135.0	170.3	133.0	3.3	2.0	173.1	134.8	169.8	132.9	3.3	1.9
2004	207.6	157.9	206.4	157.0	1.2	0.9	207.6	158.3	206.4	157.3	1.2	0.9
2005	222.4	173.5	221.6	172.7	0.8	0.8	222.2	174.4	221.4	173.7	0.8	0.7
2006	202.7	165.2	202.0	164.6	0.7	0.6	202.6	166.0	201.9	165.4	0.7	0.6
2007	245.9	179.7	244.1	179.3	1.8	0.5	246.2	181.6	244.3	180.6	1.8	1.0
2008	228.3	183.7	228.3	183.7	-	-	228.3	187.3	228.3	187.3	-	-
2009	225.0	183.9	224.8	183.7	0.2	0.2	224.9	186.2	224.7	186.0	0.2	0.2
2010	181.9	151.5	181.0	151.0	0.8	0.5	182.0	152.7	181.2	152.1	0.8	0.6
2011	230.1	189.5	230.1	189.5	-	-	230.1	193.5	230.1	193.5	-	-
2012	221.0	192.2	221.0	192.2	-	-	221.2	193.6	221.2	193.6	-	-
2013	229.9	189.4	229.9	189.4	-	-	227.6	193.4	227.6	193.4	-	-
2014	249.7	204.9	248.7	204.6	1.0	0.3	249.8	209.4	248.8	209.1	1.0	0.3
2015	262.1	220.2	261.8	220.0	0.3	0.2	262.4	221.7	262.2	221.5	0.3	0.2
2016	342.7	272.2	342.5	272.0	0.2	0.2	342.7	274.9	342.5	274.8	0.2	0.0



2: Arrivals by Air (Scheduled Flights)

Table 2.01 Arrivals by Air from U.K. (Scheduled Flights), 1992 - 1995

	Seats used (000's)				Seats offered (000's)				Load factor (%)			
	1992	1993	1994	1995	1992	1993	1994	1995	1992	1993	1994	1995
January	6.2	5.7	5.1	4.1	10.0	7.4	7.1	7.8	61.2	77.9	71.3	53.0
February	6.2	5.5	5.0	5.6	8.7	6.1	5.9	6.6	71.0	90.7	83.5	84.2
March	7.7	7.1	6.9	7.3	9.2	7.5	7.4	7.8	83.0	95.9	93.8	93.8
April	9.1	8.2	6.7	7.7	12.8	10.2	9.4	10.1	71.1	79.9	71.0	76.0
May	9.3	8.6	8.3	8.1	12.5	11.1	9.9	10.3	74.1	76.7	83.2	78.1
June	9.6	8.6	8.3	7.6	12.0	11.1	10.6	9.8	79.8	77.7	79.0	77.0
July	11.5	10.1	9.6	8.8	12.5	10.9	10.8	10.3	92.2	92.3	89.0	85.8
August	9.8	8.8	8.4	7.8	12.6	11.0	11.2	10.1	77.4	79.9	75.4	77.7
September	6.9	8.7	8.3	7.2	8.3	10.7	10.2	9.3	82.9	81.5	80.8	77.7
October	9.0	7.9	7.5	7.3	11.9	11.2	9.8	10.0	75.6	70.5	76.3	73.7
November	6.6	6.1	5.3	5.8	8.8	7.3	6.9	8.4	74.7	84.0	76.3	69.5
December	6.0	5.8	5.9	6.5	7.5	6.9	7.2	8.9	79.5	84.8	82.4	73.8
Total	97.7	91.2	85.2	83.8	127.0	111.4	106.4	109.4	76.9	81.9	80.0	76.7

Table 2.02 Arrivals by Air from U.K. (Scheduled Flights), 1996 - 1999

	Seats used (000's)				Seats offered (000's)				Load factor (%)			
	1996	1997	1998	1999	1996	1997	1998	1999	1996	1997	1998	1999
January	4.6	4.6	4.8	5.2	7.7	7.9	9.4	8.4	53.9	57.8	51.1	62.5
February	5.5	5.2	6.0	6.3	7.7	6.3	9.0	7.4	68.9	83.0	66.4	84.5
March	7.0	6.1	7.6	8.1	8.4	6.9	9.8	8.8	83.7	87.4	78.1	91.4
April	6.3	5.4	7.8	7.8	8.5	6.6	10.0	9.8	74.3	82.3	77.9	80.4
May	7.7	8.6	9.0	10.0	9.0	9.9	11.4	12.5	86.4	86.4	79.0	80.3
June	7.5	7.6	8.0	9.8	8.7	9.4	10.9	11.8	85.6	80.2	73.6	82.7
July	7.6	8.6	9.3	10.7	8.4	9.5	10.6	12.4	90.7	90.8	87.3	85.8
August	6.6	8.3	9.2	9.2	7.5	10.0	11.2	11.6	87.8	83.4	82.2	79.2
September	7.2	8.1	8.4	8.9	8.4	10.7	10.7	11.8	86.4	75.6	78.0	75.6
October	6.6	8.5	8.2	8.3	8.5	10.4	11.2	11.7	78.3	81.1	73.1	70.3
November	5.8	5.9	6.5	6.5	7.8	9.2	8.4	9.7	74.5	63.7	78.0	67.0
December	5.7	6.4	6.3	7.1	8.1	9.8	7.9	10.6	70.7	65.8	79.7	66.9
Total	78.1	83.2	91.0	97.8	98.7	106.6	120.4	126.5	79.1	78.0	75.6	77.3

2: Arrivals by Air (Scheduled Flights)

Table 2.03 Arrivals by Air from U.K. (Scheduled Flights), 2000 - 2003

	Seats used (000's)				Seats offered (000's)				Load factor (%)			
	2000	2001	2002	2003	2000	2001	2002	2003	2000	2001	2002	2003
January	4.6	5.4	5.5	6.5	11.1	9.4	9.3	11.4	41.5	57.3	59.6	57.4
February	6.2	6.9	7.6	7.9	9.8	8.3	8.9	9.3	63.6	82.7	85.9	84.8
March	8.7	8.6	10.2	10.3	10.7	9.8	11.7	13.2	81.3	87.9	87.4	78.2
April	9.1	9.0	8.0	11.0	10.4	10.6	10.7	13.2	87.2	84.5	75.2	82.9
May	10.1	11.1	10.4	13.0	13.4	13.2	14.1	16.1	75.9	83.6	73.8	80.9
June	9.7	11.0	10.4	12.2	12.4	12.8	13.3	15.6	78.3	85.7	78.3	78.6
July	10.8	11.7	13.2	14.6	13.4	13.5	14.6	16.1	80.8	86.6	90.4	90.6
August	10.1	10.5	12.2	13.2	12.9	13.4	14.3	16.1	78.1	78.3	85.5	81.8
September	10.5	10.2	11.4	12.0	12.7	12.8	13.6	15.5	82.5	79.5	83.6	77.2
October	10.0	9.5	11.0	12.3	13.4	13.4	14.4	15.9	74.6	70.9	76.4	77.5
November	7.0	7.5	8.0	10.2	9.1	10.6	10.7	14.1	76.2	71.1	74.7	71.9
December	7.0	7.5	7.6	9.8	9.3	9.7	10.7	13.8	75.0	76.5	71.4	71.3
Total	103.7	108.8	115.7	133.0	138.6	137.7	146.3	170.3	74.9	79.0	79.1	78.1

Table 2.04 Arrivals by Air from U.K. (Scheduled Flights), 2004 - 2007

	Seats used (000's)				Seats offered (000's)				Load factor (%)			
	2004	2005	2006	2007	2004	2005	2006	2007	2004	2005	2006	2007
January	7.5	10.0	9.7	7.8	12.4	15.9	15.5	11.4	60.0	62.7	62.7	68.7
February	9.2	10.5	10.7	7.8	11.9	14.4	14.8	10.8	77.8	73.2	72.5	72.3
March	12.4	13.4	14.6	9.6	15.4	16.6	17.6	12.7	80.7	80.7	83.3	75.4
April	12.9	13.9	15.2	11.1	16.7	17.6	17.8	14.0	77.0	78.9	85.2	79.6
May	14.0	16.0	17.1	13.7	20.2	21.1	19.3	16.8	69.3	75.8	88.6	81.1
June	14.3	16.2	16.8	13.4	19.5	20.4	19.8	16.4	73.4	79.7	84.9	81.7
July	17.5	18.4	17.9	15.5	20.1	21.1	19.6	16.9	87.2	87.4	91.2	91.7
August	16.2	18.2	14.4	13.4	20.2	21.2	17.4	16.4	80.4	85.8	82.9	81.7
September	15.5	17.0	13.9	14.1	19.6	20.5	17.6	16.4	79.0	83.3	79.0	85.9
October	14.3	16.4	13.8	14.1	20.3	20.9	17.4	17.0	70.6	78.4	79.5	82.5
November	11.7	11.5	9.8	11.2	15.2	16.7	11.7	13.2	76.8	69.0	83.7	84.7
December	11.6	11.1	10.7	10.5	15.0	15.3	13.6	12.7	77.0	72.7	78.8	82.6
Total	157.0	172.7	164.6	142.1	206.4	221.6	202.0	174.8	76.1	77.9	81.5	81.3

2: Arrivals by Air (Scheduled Flights)

Table 2.05 Arrivals by Air from U.K. (Scheduled Flights), 2008 - 2010

	Seats used (000's)			Seats offered (000's)			Load factor (%)		
	2008	2009	2010	2008	2009	2010	2008	2009	2010
January	9.0	10.9	9.0	13.0	15.6	13.0	69.4	69.8	69.1
February	8.6	12.2	9.5	10.4	15.5	11.6	83.2	79.1	81.5
March	11.3	16.1	12.1	12.3	18.7	14.0	91.2	86.5	86.3
April	15.1	16.3	9.7	18.3	19.3	11.5	82.8	84.7	84.4
May	16.8	17.0	13.4	19.4	18.8	15.7	86.8	90.3	85.0
June	15.8	17.0	14.2	18.9	18.5	15.7	83.4	92.0	90.6
July	19.4	17.7	15.1	21.4	19.1	16.2	90.6	92.9	93.3
August	18.1	16.3	14.9	21.3	18.8	16.2	85.2	86.8	91.6
September	17.7	15.9	14.4	22.2	18.4	16.4	79.7	86.3	87.6
October	18.1	15.6	15.1	22.2	18.4	18.2	81.1	84.7	83.0
November	13.9	11.1	11.9	19.4	14.1	15.6	71.7	79.1	76.2
December	15.2	10.6	10.9	18.7	13.1	13.7	81.2	80.8	79.2
Total	179.0	176.8	150.1	217.5	208.1	178.0	82.3	84.9	84.3

Table 2.06 Arrivals by Air from U.K. (Scheduled Flights), 2011 - 2013

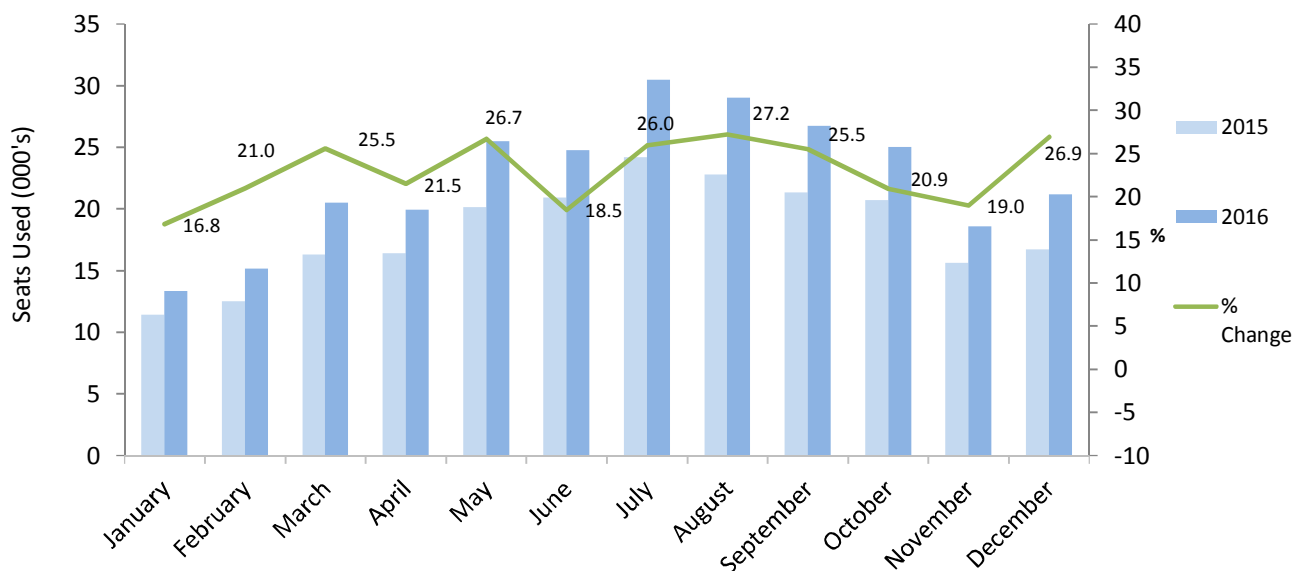
	Seats used (000's)			Seats offered (000's)			Load factor (%)		
	2011	2012	2013	2011	2012	2013	2011	2012	2013
January	9.1	11.4	8.9	14.0	15.8	13.5	65.4	72.3	66.1
February	10.1	12.9	12.0	13.4	15.0	13.8	75.0	86.4	86.6
March	12.8	15.9	14.8	16.1	17.0	16.3	79.8	93.4	90.6
April	15.3	16.2	13.6	18.5	20.2	17.4	83.0	80.1	78.1
May	17.1	16.9	16.6	21.3	19.1	19.5	80.5	88.8	85.0
June	18.2	18.3	18.0	22.3	20.1	20.7	81.8	90.9	87.1
July	21.5	20.8	21.1	23.9	21.9	23.0	89.9	95.3	91.6
August	21.5	19.8	19.7	24.1	21.7	22.7	89.2	91.1	86.7
September	18.8	17.4	18.6	22.4	19.7	22.8	84.0	88.4	81.7
October	17.1	17.1	17.5	20.8	19.7	22.3	82.4	87.0	78.4
November	13.8	12.1	14.0	16.8	15.0	19.0	82.2	80.6	73.9
December	14.1	13.4	14.6	16.7	16.0	18.9	84.5	83.7	77.4
Total	189.5	192.2	189.4	230.1	221.0	229.9	82.4	86.9	82.4

2: Arrivals by Air (Scheduled Flights)

Table 2.07 Arrivals by Air from U.K. (Scheduled Flights), 2014 - 2016

	Seats used (000's)			Seats offered (000's)			Load factor (%)		
	2014	2015	2016	2014	2015	2016	2014	2015	2016
January	12.2	11.4	13.3	18.3	16.3	19.4	66.4	70.1	68.6
February	13.4	12.5	15.1	17.6	15.4	18.9	76.4	80.7	80.0
March	16.6	16.3	20.5	19.7	17.7	23.5	84.1	92.0	87.1
April	16.5	16.4	19.9	19.5	19.4	25.8	84.8	84.3	77.2
May	17.3	20.1	25.5	20.4	22.9	31.6	84.9	87.9	80.7
June	17.8	20.9	24.8	21.2	23.7	30.7	84.0	88.1	80.7
July	21.3	24.2	30.5	23.8	25.2	34.6	89.6	96.1	88.0
August	20.9	22.8	29.0	24.4	25.7	35.3	85.7	88.8	82.1
September	19.3	21.3	26.7	23.3	24.6	33.0	83.0	86.4	81.0
October	19.2	20.7	25.0	22.2	24.9	32.6	86.6	83.0	76.8
November	14.4	15.6	18.6	19.5	20.5	24.7	73.9	75.9	75.3
December	15.6	16.7	21.2	18.9	19.9	25.3	82.7	83.9	83.7
Total	204.6	218.7	270.1	248.7	256.2	335.4	82.3	85.4	80.5

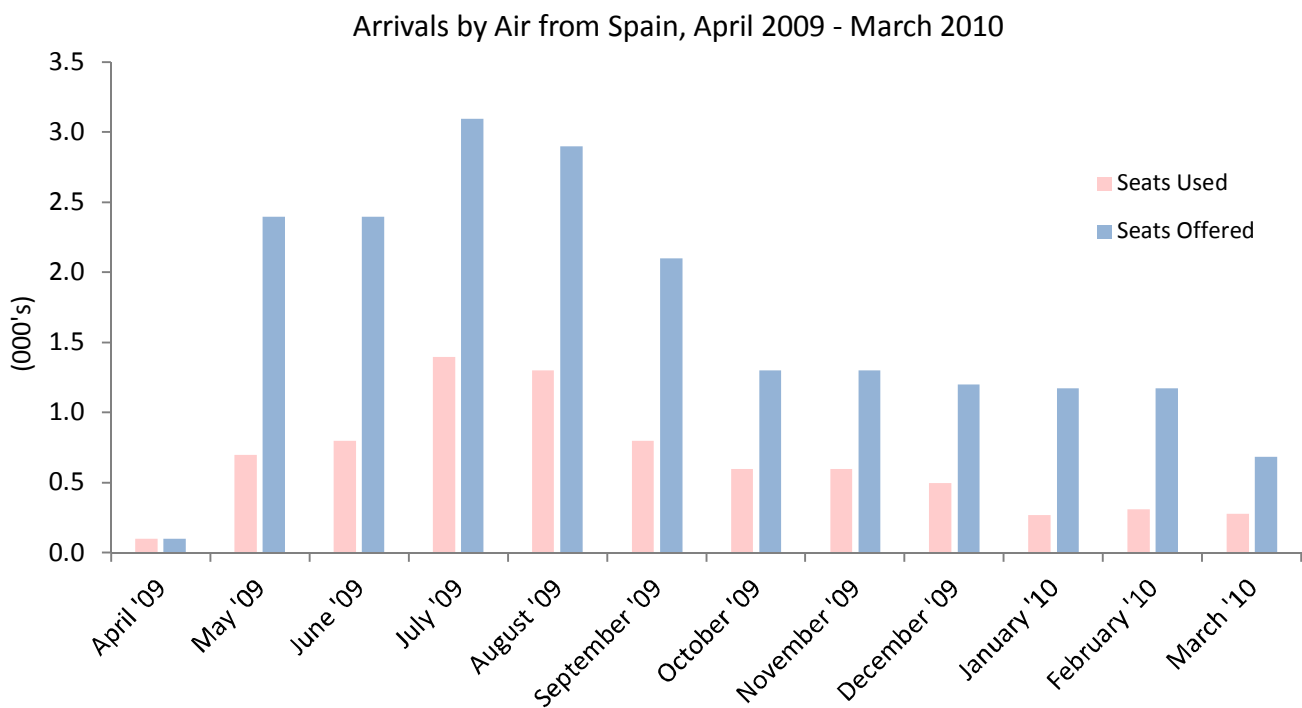
Arrivals by Air from U.K. (Scheduled Flights), Seats Used, 2015 -2016



2: Arrivals by Air (Scheduled Flights)

Table 2.08 Arrivals by Air from Spain (Scheduled Flights), 2008 - 2010

	Seats used (000's)			Seats offered (000's)			Load factor (%)		
	2008	2009	2010	2008	2009	2010	2008	2009	2010
January	0.3	-	0.3	1.1	-	1.2	29.6	-	23.0
February	0.5	-	0.3	1.3	-	1.2	36.0	-	26.4
March	0.5	-	0.3	1.3	-	0.7	42.3	-	40.5
April	0.3	0.1	-	1.1	0.1	-	26.6	51.0	-
May	0.4	0.7	-	1.3	2.4	-	32.5	31.8	-
June	0.5	0.8	-	1.0	2.4	-	53.5	35.1	-
July	0.7	1.4	-	1.1	3.1	-	63.4	45.9	-
August	0.8	1.3	-	1.4	2.9	-	57.0	44.8	-
September	0.6	0.8	-	1.1	2.1	-	49.7	38.8	-
October	-	0.6	-	-	1.3	-	-	47.8	-
November	-	0.6	-	-	1.3	-	-	49.6	-
December	-	0.5	-	-	1.2	-	-	42.9	-
Total	4.7	6.9	0.9	10.7	16.6	3.0	43.3	41.5	28.3

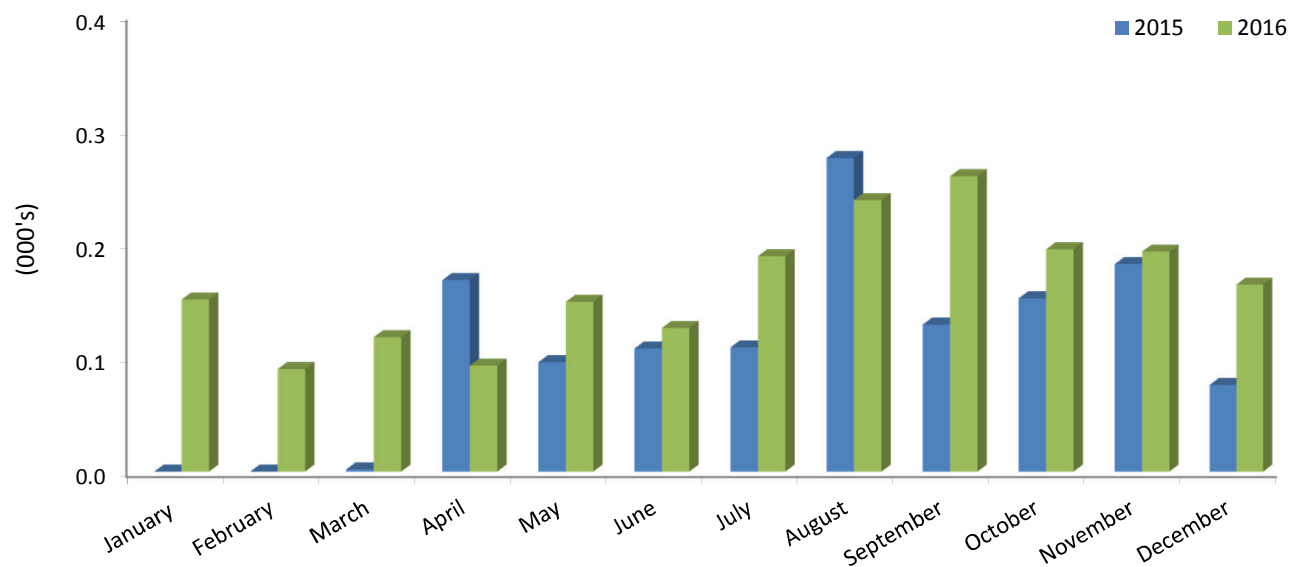


2: Arrivals by Air (Scheduled Flights)

Table 2.09 Arrivals by Air from Tangier (Scheduled Flights), 2015 - 2016

	Seats used (000's)		Seats offered (000's)		Load factor (%)	
	2015	2016	2015	2016	2015	2016
January	-	0.2	-	0.6	-	27.0
February	-	0.1	-	0.6	-	16.1
March	0.0	0.1	0.1	0.6	2.9	18.7
April	0.2	0.1	0.6	0.6	26.7	16.6
May	0.1	0.1	0.6	0.6	15.2	23.7
June	0.1	0.1	0.6	0.6	19.3	20.0
July	0.1	0.2	0.6	0.6	17.3	30.0
August	0.3	0.2	0.6	0.6	43.7	42.5
September	0.1	0.3	0.6	0.6	23.0	41.1
October	0.2	0.2	0.6	0.6	24.1	31.0
November	0.2	0.2	0.6	0.6	28.9	34.5
December	0.1	0.2	0.6	0.6	12.1	29.3
Total	1.3	2.0	5.6	7.1	23.2	27.5

Arrivals by Air from Tangier, (Scheduled Flights), Seats Used, 2015 - 2016



3: Departures by Air (Scheduled Flights)

Table 3.01 Departures by Air to U.K. (Scheduled Flights), 1992 - 1994

	Seats used (000's)			Seats offered (000's)			Load factor (%)					
	1992	1993	1994	1992	1993	1994	1992		1993		1994	
							(i)	(ii)	(i)	(ii)	(i)	(ii)
January	6.7	6.1	5.8	10.2	7.6	7.1	65.9 (64.8)	80.5 (79.3)	81.9 (80.8)			
February	6.2	5.4	5.0	8.6	6.4	6.2	72.5 (70.2)	83.8 (82.9)	81.7 (80.1)			
March	7.0	6.7	5.5	9.2	7.8	7.5	76.0 (73.8)	86.1 (84.7)	74.1 (72.9)			
April	9.5	8.3	7.6	12.8	10.0	9.3	74.3 (73.2)	82.3 (81.0)	81.9 (81.2)			
May	8.6	7.9	7.6	12.6	11.1	10.1	68.1 (66.8)	71.3 (69.8)	76.3 (75.2)			
June	9.8	9.4	8.7	12.2	11.1	10.4	80.4 (79.1)	84.1 (82.9)	84.8 (83.7)			
July	9.8	8.7	8.4	12.5	11.3	10.9	78.5 (76.7)	77.5 (76.7)	77.0 (77.5)			
August	11.5	10.0	9.7	12.8	10.9	10.9	89.7 (88.8)	91.4 (90.5)	89.0 (88.3)			
September	7.6	9.7	9.3	8.2	10.5	10.2	91.9 (90.2)	92.2 (91.0)	91.8 (91.2)			
October	10.5	9.5	8.9	11.9	11.1	10.2	87.7 (85.9)	86.0 (85.0)	88.3 (87.5)			
November	7.8	6.5	5.6	9.0	7.3	6.8	86.0 (84.2)	88.8 (87.3)	83.3 (82.4)			
December	5.6	5.1	4.8	7.6	6.9	7.2	73.8 (72.5)	73.2 (72.4)	67.3 (66.9)			
Total	100.5	93.3	86.9	127.7	112.2	107.1	78.7 (77.2)	83.2 (82.0)	81.2 (80.3)			

Table 3.02 Departures by Air to U.K. (Scheduled Flights), 1995 - 1997

	Seats used (000's)			Seats offered (000's)			Load factor (%)					
	1995	1996	1997	1995	1996	1997	1995		1996		1997	
							(i)	(ii)	(i)	(ii)	(i)	(ii)
January	5.5	5.3	4.7	7.8	7.7	6.8	70.8 (70.3)	69.4 (69.0)	68.5 (67.4)			
February	5.2	5.6	5.1	6.9	8.2	6.4	75.1 (74.4)	68.1 (67.6)	79.4 (78.3)			
March	6.6	6.3	5.2	7.7	8.1	6.8	85.1 (84.6)	77.1 (76.4)	76.4 (75.5)			
April	8.3	7.0	6.1	10.3	8.7	6.7	80.5 (80.3)	81.0 (80.7)	90.1 (89.7)			
May	7.3	7.0	7.7	10.4	8.7	9.6	69.8 (69.4)	79.9 (79.5)	79.8 (79.2)			
June	8.2	8.1	7.9	9.9	9.1	9.5	82.5 (82.0)	89.5 (89.1)	83.2 (83.0)			
July	7.9	6.8	7.5	10.3	8.6	9.7	76.5 (76.0)	79.1 (79.0)	77.0 (76.7)			
August	8.5	6.8	8.7	10.3	7.6	9.5	82.8 (82.4)	89.7 (89.5)	91.7 (91.4)			
September	8.4	8.0	8.8	9.6	8.5	10.5	87.6 (87.0)	93.5 (93.2)	83.8 (83.5)			
October	8.3	7.3	8.6	9.9	8.3	9.6	83.0 (82.4)	88.6 (88.2)	90.0 (89.6)			
November	6.3	5.9	6.5	8.5	7.6	9.2	73.8 (73.1)	77.7 (77.1)	70.3 (70.0)			
December	4.8	4.1	4.7	7.9	7.0	10.1	61.5 (60.8)	58.8 (58.4)	46.3 (46.1)			
Total	85.3	78.2	81.5	109.5	98.1	104.4	77.8 (77.3)	79.6 (79.0)	78.1 (77.6)			

Notes:

(i) Passenger load factor.

(ii) Revenue load factor.

3: Departures by Air (Scheduled Flights)

Table 3.03 Departures by Air to U.K. (Scheduled Flights), 1998 - 2000

	Seats used (000's)			Seats offered (000's)			Load factor (%)					
	1998	1999	2000	1998	1999	2000	1998		1999		2000	
							(i)	(ii)	(i)	(ii)	(i)	(ii)
January	6.0	6.3	6.5	9.5	8.5	11.1	63.1	(62.7)	74.1	(73.9)	58.8	(58.7)
February	5.3	5.7	6.0	8.7	7.5	9.8	60.7	(60.2)	75.1	(74.3)	61.5	(61.4)
March	6.7	7.0	8.0	9.9	8.5	10.6	67.9	(67.9)	82.8	(82.7)	75.2	(74.9)
April	8.2	8.7	9.1	10.0	9.8	10.1	81.9	(81.7)	89.0	(88.5)	89.4	(89.3)
May	8.0	8.9	9.9	11.2	12.5	13.3	71.3	(70.9)	71.0	(71.0)	74.5	(74.5)
June	8.1	10.0	10.5	10.8	11.6	12.4	74.6	(74.2)	86.3	(86.3)	84.9	(84.8)
July	7.7	9.4	9.8	10.3	12.5	13.4	74.5	(74.3)	75.7	(75.7)	73.0	(72.9)
August	9.9	9.6	10.6	11.1	11.4	12.7	89.5	(89.4)	84.7	(84.7)	83.6	(83.5)
September	9.2	10.2	11.7	10.4	11.8	12.8	88.5	(88.4)	86.3	(86.3)	91.4	(91.2)
October	8.9	9.0	11.1	11.0	11.8	13.2	80.5	(80.3)	76.4	(76.4)	84.2	(84.1)
November	7.1	7.4	7.5	8.3	10.0	9.2	84.9	(84.4)	74.4	(74.4)	82.1	(82.0)
December	5.0	5.1	5.7	7.6	10.6	9.3	66.2	(65.5)	48.0	(47.9)	61.3	(60.8)
Total	90.1	97.4	106.6	119.0	126.5	138.1	75.7	(75.4)	77.0	(76.9)	77.2	(77.1)

Table 3.04 Departures by Air to U.K. (Scheduled Flights), 2001 - 2003

	Seats used (000's)			Seats offered (000's)			Load factor (%)					
	2001	2002	2003	2001	2002	2003	2001		2002		2003	
							(i)	(ii)	(i)	(ii)	(i)	(ii)
January	6.6	6.4	7.5	9.4	9.5	11.4	70.2	(70.2)	67.7	(67.7)	66.2	(66.2)
February	6.6	7.0	7.3	8.4	8.9	9.3	78.9	(78.9)	78.4	(78.4)	77.8	(77.8)
March	7.9	8.4	10.1	9.8	11.1	13.2	81.0	(81.0)	75.7	(75.7)	76.6	(76.6)
April	9.4	9.3	10.5	10.6	10.7	12.9	87.9	(87.9)	86.5	(86.5)	81.1	(81.1)
May	10.2	9.4	12.0	13.3	14.1	16.1	76.7	(76.7)	66.5	(66.5)	74.7	(74.6)
June	11.0	10.5	12.8	12.9	13.3	15.4	85.7	(85.7)	79.1	(79.1)	83.3	(83.3)
July	10.3	10.8	12.0	13.5	14.8	16.1	76.0	(76.0)	72.9	(72.9)	74.7	(74.6)
August	11.5	13.1	14.6	13.4	14.5	16.1	85.4	(85.4)	90.5	(90.5)	91.0	(91.0)
September	11.1	12.6	13.7	12.8	13.6	15.5	86.6	(86.6)	92.7	(92.7)	88.1	(88.1)
October	11.3	11.7	12.9	13.5	14.4	15.9	83.9	(83.9)	81.3	(81.3)	81.0	(80.9)
November	8.5	8.6	10.9	10.7	10.7	14.1	79.9	(79.9)	80.6	(80.6)	77.4	(77.4)
December	6.0	6.2	8.5	9.5	10.5	13.8	63.2	(63.2)	58.8	(58.8)	61.6	(61.6)
Total	110.5	114.0	132.9	137.9	146.1	169.8	80.1	(80.1)	78.0	(78.0)	78.2	(78.2)

Notes:

(i) Passenger load factor.

(ii) Revenue load factor.

3: Departures by Air (Scheduled Flights)

Table 3.05 Departures by Air to U.K. (Scheduled Flights), 2004 - 2006

	Seats used (000's)			Seats offered (000's)			Load factor (%)					
	2004	2005	2006	2004	2005	2006	2004		2005		2006	
							(i)	(ii)	(i)	(ii)	(i)	(ii)
January	8.7	11.9	10.5	12.4	15.8	15.7	70.0 (69.9)		75.4 (75.4)		66.6 (66.6)	
February	9.1	10.2	10.6	11.9	14.4	14.8	76.2 (76.2)		70.8 (70.8)		72.1 (72.1)	
March	11.6	11.8	13.2	15.4	16.6	17.6	75.3 (75.3)		71.1 (71.1)		75.5 (75.5)	
April	13.0	14.4	15.5	16.7	17.6	17.8	77.7 (77.7)		81.9 (81.9)		87.0 (87.0)	
May	12.3	14.4	15.8	20.2	21.1	19.3	61.0 (61.0)		68.8 (68.8)		82.1 (82.1)	
June	15.1	17.2	17.7	19.5	20.5	19.8	77.6 (77.6)		83.7 (83.7)		89.3 (89.3)	
July	14.9	16.3	16.3	20.0	21.1	19.6	74.2 (74.2)		77.5 (77.5)		83.1 (83.1)	
August	17.9	18.8	15.9	20.2	21.2	17.6	88.5 (88.5)		88.7 (88.7)		90.4 (90.4)	
September	17.1	19.0	15.4	19.6	20.4	17.2	87.2 (87.2)		92.8 (92.8)		89.5 (89.5)	
October	15.4	17.5	14.5	20.3	20.9	17.4	75.8 (75.8)		83.8 (83.8)		83.7 (83.7)	
November	12.6	12.6	10.5	15.2	16.6	11.6	83.1 (83.1)		75.8 (75.8)		90.0 (90.0)	
December	9.8	9.6	9.5	15.0	15.1	13.6	64.9 (64.9)		63.3 (63.3)		70.0 (70.0)	
Total	157.3	173.7	165.4	206.4	221.4	201.9	76.2 (76.2)		78.5 (78.5)		81.9 (81.9)	

Table 3.06 Departures by Air to U.K. (Scheduled Flights), 2007 - 2009

	Seats used (000's)			Seats offered (000's)			Load factor (%)					
	2007	2008	2009	2007	2008	2009	2007		2008		2009	
							(i)	(ii)	(i)	(ii)	(i)	(ii)
January	8.6	9.7	12.5	11.4	13.0	15.6	75.6 (75.6)		74.5		80.0	
February	7.9	8.5	12.2	10.8	10.4	15.4	73.0 (73.0)		81.7		79.1	
March	8.9	10.3	15.0	12.7	12.3	18.7	69.8 (69.8)		83.4		80.3	
April	10.9	15.8	16.6	13.9	18.3	19.3	78.2 (78.2)		86.3		85.9	
May	12.7	16.2	16.5	17.0	19.4	18.8	74.8 (74.8)		83.3		87.7	
June	14.0	16.4	17.0	16.2	18.8	18.5	86.1 (86.1)		87.2		91.9	
July	14.1	18.0	16.6	16.9	21.5	19.0	83.7 (83.7)		83.7		87.5	
August	14.0	19.6	17.4	16.2	21.3	18.8	86.1 (86.1)		91.8		92.7	
September	15.3	20.0	17.3	16.4	22.3	18.4	93.4 (93.4)		89.8		93.9	
October	14.9	18.9	16.4	17.2	22.3	18.4	86.7 (86.7)		84.5		89.1	
November	12.0	15.8	12.0	13.2	19.4	14.1	91.1 (91.1)		81.2		85.2	
December	9.4	13.5	9.7	12.7	18.5	13.1	73.6 (73.6)		72.9		74.1	
Total	142.7	182.5	179.1	174.7	217.6	208.1	81.7 (81.7)		83.9		86.1	

Notes:

*(i) Passenger load factor.**(ii) Revenue load factor.*

3: Departures by Air (Scheduled Flights)

Table 3.07 Departures by Air to U.K. (Scheduled Flights), 2010 - 2011

	Seats used (000's)		Seats offered (000's)		Load factor (%)	
	2010	2011	2010	2011	2010	2011
January	9.4	10.3	13.0	14.0	71.8	73.4
February	9.1	10.1	11.6	13.4	78.9	75.3
March	10.9	12.5	14.0	16.1	77.5	77.9
April	9.1	14.8	11.5	18.5	77.7	80.3
May	13.0	16.4	15.7	21.3	82.9	77.2
June	14.2	18.9	15.7	22.3	90.6	84.7
July	14.4	19.6	16.2	23.9	89.4	81.9
August	15.5	22.1	16.2	24.1	95.3	92.3
September	15.6	21.4	16.4	22.4	94.7	95.5
October	16.5	18.8	18.2	20.8	90.8	90.3
November	13.2	15.5	15.6	16.8	84.1	91.8
December	10.3	13.1	13.7	16.7	74.9	78.5
Total	151.1	193.5	178.0	230.1	84.8	84.1

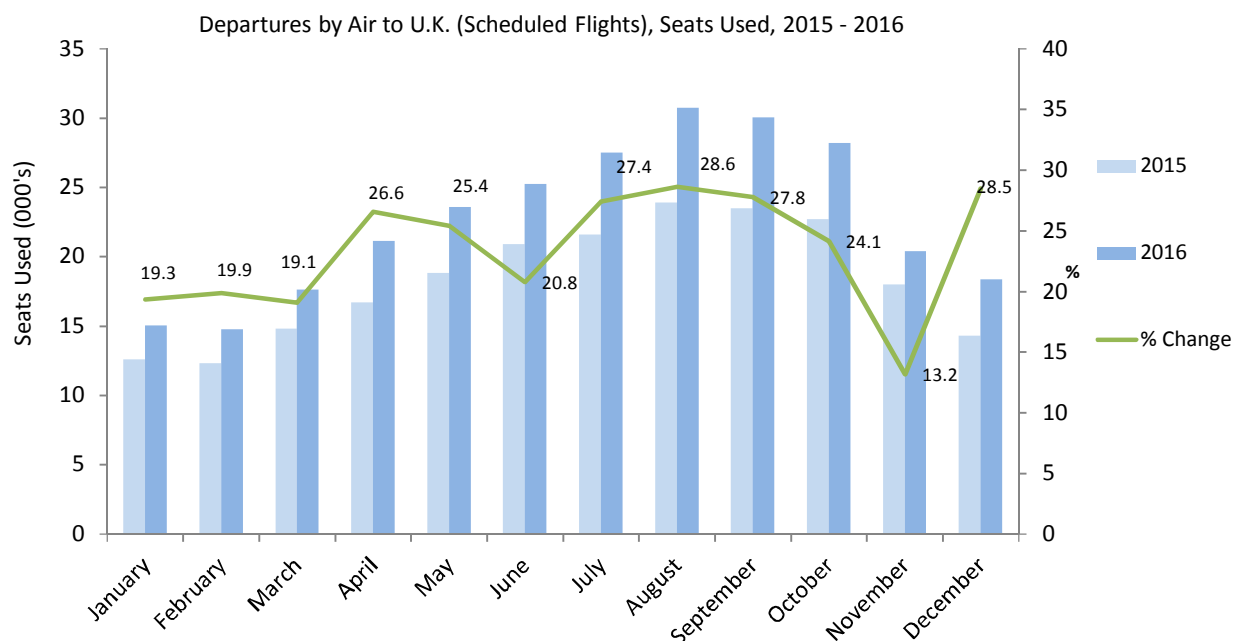
Table 3.08 Departures by Air to U.K. (Scheduled Flights), 2012 - 2013

	Seats used (000's)		Seats offered (000's)		Load factor (%)	
	2012	2013	2012	2013	2012	2013
January	12.4	10.1	15.8	13.5	78.3	74.9
February	12.9	11.8	15.0	13.8	86.3	84.9
March	14.7	13.3	17.1	16.3	86.1	81.7
April	16.9	14.7	20.2	17.4	83.8	84.0
May	15.8	15.5	19.0	19.5	83.2	79.6
June	18.0	18.2	20.1	20.7	89.6	87.7
July	19.3	19.5	21.9	22.8	88.4	85.3
August	20.5	21.4	21.8	22.8	94.3	93.9
September	19.0	21.1	19.7	22.8	96.9	92.4
October	18.4	18.2	19.7	22.3	93.4	81.5
November	13.6	15.6	15.0	19.0	90.4	82.2
December	11.9	14.0	16.0	16.5	74.5	85.0
Total	193.6	193.4	221.2	227.6	87.5	85.0

3: Departures by Air (Scheduled Flights)

Table 3.09 Departures by Air to U.K. (Scheduled Flights), 2014 - 2016

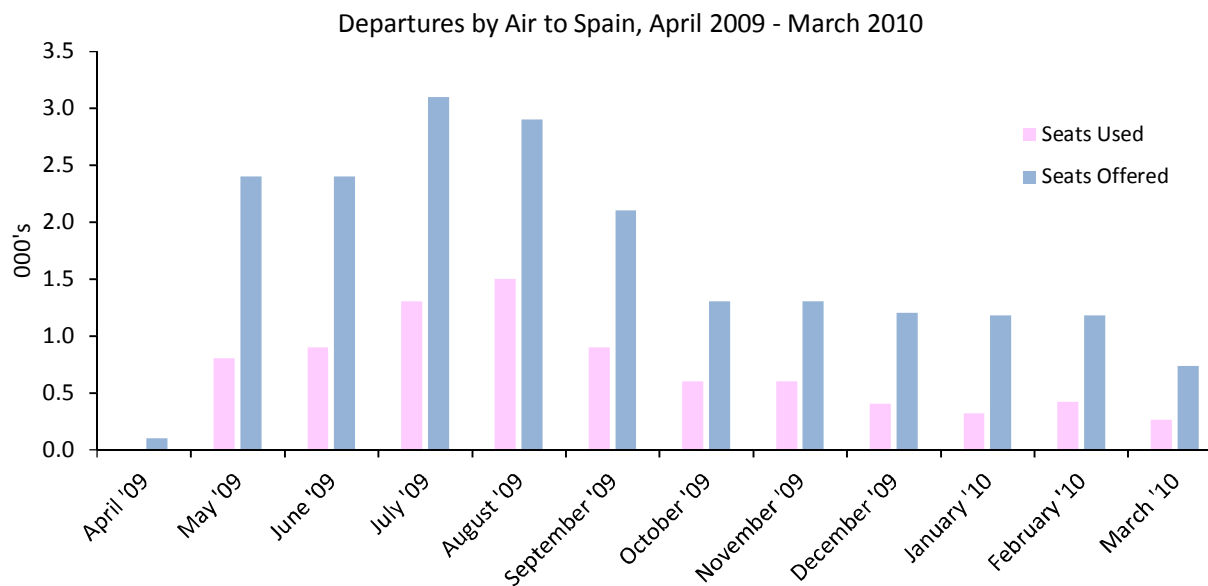
	Seats used (000's)			Seats offered (000's)			Load factor (%)		
	2014	2015	2016	2014	2015	2016	2014	2015	2016
January	13.4	12.6	15.0	18.3	16.3	19.4	73.0	77.1	77.6
February	13.4	12.3	14.7	17.6	15.5	18.9	76.0	79.8	78.0
March	16.0	14.8	17.6	19.7	17.7	23.5	81.2	83.5	75.0
April	16.8	16.7	21.1	19.5	19.5	25.8	86.4	85.6	82.0
May	16.6	18.8	23.6	20.4	22.9	31.6	81.4	82.1	74.7
June	18.0	20.9	25.2	21.2	23.8	30.5	84.9	87.7	82.6
July	19.9	21.6	27.5	23.8	25.2	34.7	83.7	85.7	79.4
August	22.4	23.9	30.7	24.4	25.7	35.4	91.5	92.8	86.9
September	21.5	23.5	30.0	23.2	24.6	33.0	92.7	95.6	90.9
October	20.6	22.7	28.2	22.2	24.9	32.6	92.8	91.0	86.4
November	16.6	18.0	20.4	19.5	20.5	24.6	84.7	87.5	82.7
December	14.0	14.3	18.4	18.9	19.9	25.3	73.9	71.7	72.5
Total	209.1	220.0	272.6	248.8	256.6	335.3	84.1	85.7	81.3



3: Departures by Air (Scheduled Flights)

Table 3.10 Departures by Air to Spain (Scheduled Flights), 2008 - 2010

	Seats used (000's)			Seats offered (000's)			Load factor (%)		
	2008	2009	2010	2008	2009	2010	2008	2009	2010
January	0.4	-	0.3	1.1	-	1.2	35.7	-	27.0
February	0.4	-	0.4	1.3	-	1.2	34.5	-	35.5
March	0.6	-	0.3	1.3	-	0.7	47.2	-	35.5
April	0.3	-	-	1.1	0.1	-	25.1	29.6	-
May	0.4	0.8	-	1.3	2.4	-	34.0	33.4	-
June	0.6	0.9	-	1.0	2.4	-	56.7	37.4	-
July	0.6	1.3	-	1.1	3.1	-	55.8	41.5	-
August	0.9	1.5	-	1.4	2.9	-	67.3	50.5	-
September	0.5	0.9	-	1.1	2.1	-	45.7	42.2	-
October	-	0.6	-	-	1.3	-	-	44.1	-
November	-	0.6	-	-	1.3	-	-	47.3	-
December	-	0.4	-	-	1.2	-	-	36.3	-
Total	4.8	6.9	1.0	10.7	16.6	3.1	44.8	41.7	32.2

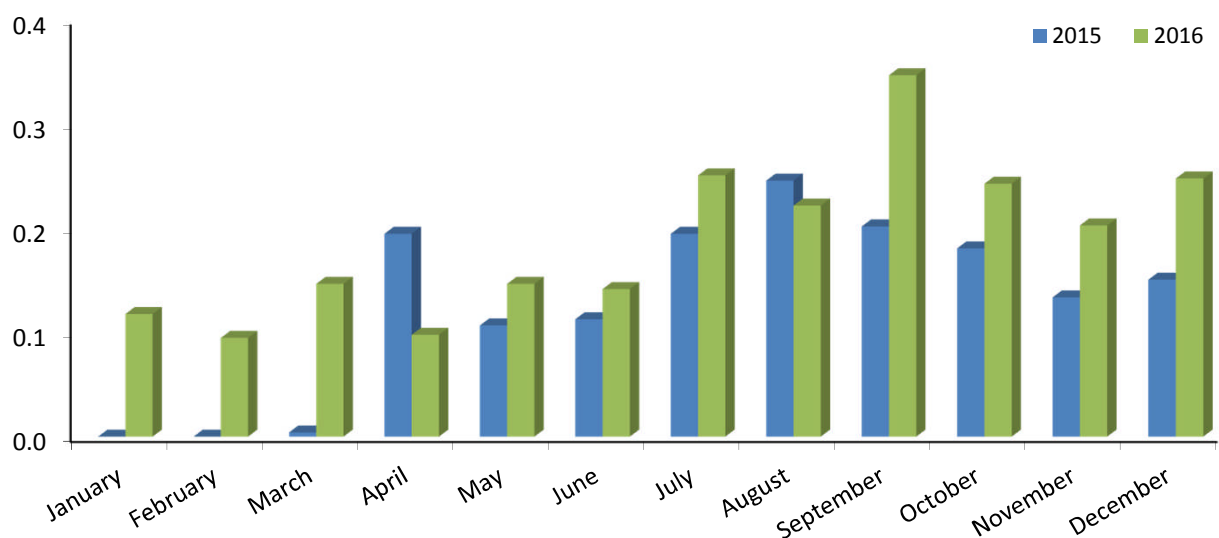


3: Departures by Air (Scheduled Flights)

Table 3.11 Departures by Air from Tangier (Scheduled Flights), 2015 - 2016

	Seats used (000's)		Seats offered (000's)		Load factor (%)	
	2015	2016	2015	2016	2015	2016
January	-	0.1	-	0.6	-	21.1
February	-	0.1	-	0.6	-	17.0
March	0.0	0.1	0.1	0.6	-	23.3
April	0.2	0.1	0.6	0.6	5.7	17.5
May	0.1	0.1	0.6	0.6	17.0	23.3
June	0.1	0.1	0.6	0.6	20.2	22.5
July	0.2	0.3	0.6	0.6	31.0	39.8
August	0.2	0.2	0.6	0.6	39.0	39.6
September	0.2	0.3	0.6	0.6	36.1	55.1
October	0.2	0.2	0.6	0.6	28.7	38.6
November	0.1	0.2	0.6	0.6	21.3	36.3
December	0.2	0.2	0.6	0.6	24.0	44.3
Total	1.5	2.3	5.6	7.1	27.3	31.7

Departures by Air to Tangier, (Scheduled Flights), Seats Used, 2015 - 2016



4: Arrivals by Air (Charter Flights)

Table 4.01 Arrivals by Air (Charter Flights), 2001 - 2003

	Seats used (000's)			Seats offered (000's)			Load factor (%)		
	2001	2002	2003	2001	2002	2003	2001	2002	2003
January	-	-	0.2	-	-	0.3	100.0	-	61.6
February	-	-	0.8	-	-	1.4	-	-	60.1
March	-	0.1	0.2	-	0.1	0.5	100.0	100.0	41.2
April	0.1	0.2	0.2	0.3	0.2	0.3	42.4	100.0	55.2
May	-	0.1	0.2	-	0.1	0.3	-	100.0	71.8
June	-	0.1	-	-	0.1	-	-	100.0	-
July	-	0.1	-	-	0.1	-	-	100.0	-
August	-	-	-	-	-	-	-	-	-
September	-	-	0.2	-	-	0.3	-	-	63.2
October	-	0.1	0.2	-	0.1	0.2	55.1	100.0	87.6
November	-	-	-	-	-	-	-	-	-
December	-	0.1	-	-	0.1	-	-	100.0	-
Total	0.1	0.9	2.0	0.3	0.9	3.3	50.9	100.0	59.9

Table 4.02 Arrivals by Air (Charter Flights), 2004 - 2006

	Seats used (000's)			Seats offered (000's)			Load factor (%)		
	2004	2005	2006	2004	2005	2006	2004	2005	2006
January	-	-	-	-	-	-	-	-	-
February	-	-	-	-	-	-	-	-	-
March	-	-	-	0.1	-	-	17.0	-	-
April	-	-	-	-	-	-	-	-	-
May	0.2	-	-	0.2	-	-	91.3	-	-
June	-	0.2	0.2	-	0.2	0.2	-	90.9	69.4
July	0.2	-	0.2	0.3	-	0.3	63.5	-	84.4
August	-	-	0.2	-	-	0.2	-	-	97.3
September	0.1	0.2	-	0.2	0.2	-	64.4	97.3	-
October	0.1	0.1	-	0.1	0.2	-	100.0	88.1	-
November	0.2	0.2	-	0.2	0.2	-	93.6	97.3	-
December	-	-	-	-	-	-	-	-	-
Total	0.9	0.8	0.6	1.2	0.8	0.7	74.4	93.7	83.8

4: Arrivals by Air (Charter Flights)

Table 4.03 Arrivals by Air (Charter Flights), 2007, 2009 - 2010

	Seats used (000's)			Seats offered (000's)			Load factor (%)		
	2007	2009	2010	2007	2009	2010	2007	2009	2010
January	-	-	-	-	-	-	-	-	-
February	-	-	-	0.1	-	-	32.8	-	-
March	-	-	-	-	-	-	-	-	-
April	-	-	-	0.1	-	-	50.0	-	-
May	-	-	0.2	0.4	-	0.4	-	-	56.7
June	-	-	-	0.2	-	-	-	-	-
July	0.4	-	-	0.5	-	-	67.9	-	-
August	-	0.2	-	-	0.2	-	-	83.1	-
September	-	-	0.3	0.2	-	0.5	-	-	67.3
October	-	-	-	-	-	-	-	-	-
November	-	-	-	0.2	-	-	20.6	-	-
December	-	-	-	0.1	-	-	-	-	-
Total	0.5	0.2	0.5	1.8	0.2	0.8	25.0	83.1	62.6

Table 4.04 Arrivals by Air (Charter Flights), 2014 - 2016

	Seats used (000's)			Seats offered (000's)			Load factor (%)		
	2014	2015	2016	2014	2015	2016	2014	2015	2016
January	-	-	-	-	-	-	-	-	-
February	-	-	-	-	-	-	-	-	-
March	-	-	-	-	-	-	-	-	-
April	0.1	-	-	0.2	-	-	46.2	-	-
May	0.1	-	0.1	0.5	-	0.2	24.5	-	90.4
June	0.1	0.2	-	0.1	0.3	-	40.7	84.0	-
July	-	-	0.0	0.1	-	0.1	16.4	-	66.0
August	-	-	-	-	-	-	-	-	-
September	-	-	-	-	-	-	-	-	-
October	-	-	-	-	-	-	-	-	-
November	-	-	-	-	-	-	-	-	-
December	-	-	-	-	-	-	-	-	-
Total	0.3	0.2	0.2	1.0	0.3	0.2	30.3	84.0	84.5

5: Departures by Air (Charter Flights)

Table 5.01 Departures by Air (Charter Flights), 2001 - 2003

	Seats used (000's)			Seats offered (000's)			Load factor (%)		
	2001	2002	2003	2001	2002	2003	2001	2002	2003
January	-	-	0.1	-	-	0.3	-	-	43.8
February	-	-	0.9	-	-	1.4	-	-	64.5
March	-	0.1	0.2	-	0.1	0.5	-	100.0	42.0
April	0.1	0.2	0.2	0.3	0.2	0.3	42.4	100.0	62.8
May	-	0.1	0.2	-	0.1	0.3	-	100.0	63.1
June	-	0.1	-	-	0.1	-	-	100.0	-
July	-	0.1	-	-	0.1	-	-	100.0	-
August	-	-	-	-	-	-	-	-	-
September	-	-	0.1	-	-	0.3	-	-	41.9
October	-	0.1	0.2	-	0.1	0.2	-	100.0	85.4
November	-	-	-	-	-	-	-	-	-
December	-	0.1	-	-	0.1	-	-	53.8	-
Total	0.1	0.9	1.9	0.3	0.9	3.3	42.4	94.6	58.2

Table 5.02 Departures by Air (Charter Flights), 2004 - 2006

	Seats used (000's)			Seats offered (000's)			Load factor (%)		
	2004	2005	2006	2004	2005	2006	2004	2005	2006
January	-	-	-	-	-	-	-	-	-
February	-	-	-	-	-	-	-	-	-
March	-	-	-	0.1	-	-	25.0	-	-
April	-	-	-	-	-	-	-	-	-
May	0.2	-	-	0.2	-	-	90.4	-	-
June	-	0.2	0.2	-	0.2	0.2	-	80.8	95.0
July	0.2	-	0.2	0.3	-	0.3	59.0	-	85.8
August	-	-	0.1	-	-	0.2	-	-	63.5
September	0.2	0.2	-	0.2	0.2	-	86.8	68.9	-
October	0.1	0.2	-	0.1	0.2	-	100.0	98.8	-
November	0.2	0.2	-	0.2	0.2	-	94.1	89.0	-
December	-	-	-	-	-	-	-	-	-
Total	0.9	0.7	0.6	1.2	0.8	0.7	78.1	83.5	81.8

5: Departures by Air (Charter Flights)

Table 5.03 Departures by Air (Charter Flights), 2007, 2009 - 2010

	Seats used (000's)			Seats offered (000's)			Load factor (%)		
	2007	2009	2010	2007	2009	2010	2007	2009	2010
January	-	-	-	-	-	-	-	-	-
February	-	-	-	0.1	-	-	32.8	-	-
March	-	-	-	-	-	-	-	-	-
April	-	-	-	0.1	-	-	50.0	-	-
May	0.2	-	0.2	0.4	-	0.4	59.6	-	65.3
June	0.2	-	-	0.2	-	-	100.0	-	-
July	0.2	-	-	0.5	-	-	42.0	-	-
August	-	0.2	-	-	0.2	-	78.6	88.6	-
September	0.2	-	0.3	0.2	-	0.5	73.5	-	73.4
October	-	-	-	-	-	-	-	-	-
November	-	-	-	0.2	-	-	18.6	-	-
December	0.1	-	-	0.1	-	-	73.6	-	-
Total	1.0	0.2	0.6	1.8	0.2	0.8	56.0	88.6	69.8

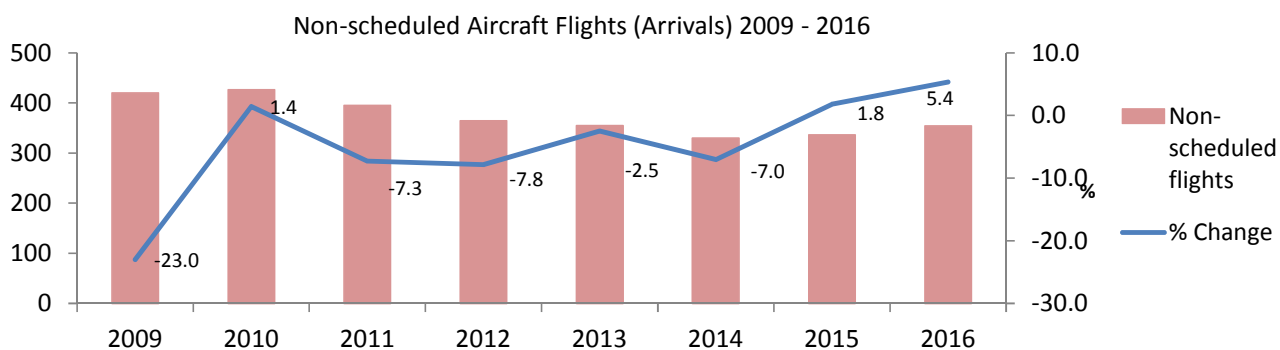
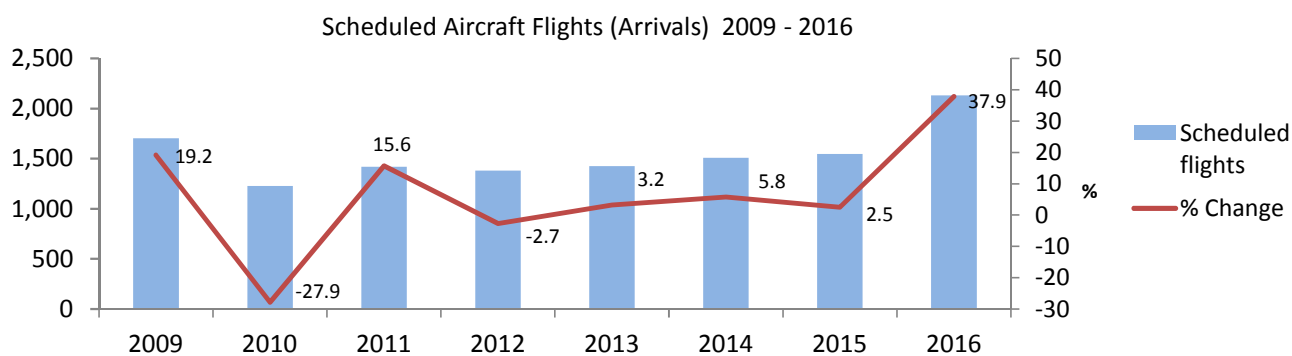
Table 5.04 Departures by Air (Charter Flights), 2014 - 2016

	Seats used (000's)			Seats offered (000's)			Load factor (%)		
	2014	2015	2016	2014	2015	2016	2014	2015	2016
January	-	-	-	-	-	-	-	-	-
February	-	-	-	-	-	-	-	-	-
March	-	-	-	-	-	-	-	-	-
April	0.1	-	-	0.2	-	-	43.8	-	-
May	0.1	-	-	0.5	-	0.2	19.0	-	-
June	0.1	0.0	-	0.1	0.0	-	46.4	80.0	-
July	-	0.2	0.0	0.1	0.2	0.1	12.9	84.8	66.0
August	-	-	-	-	-	-	-	-	-
September	-	-	-	-	-	-	-	-	-
October	-	-	-	-	-	-	-	-	-
November	-	-	-	-	-	-	-	-	-
December	-	-	-	-	-	-	-	-	-
Total	0.3	0.2	0.0	1.0	0.3	0.2	27.3	84.0	16.0

6: Aircraft Arrivals

Table 6.01 Aircraft Arrivals, 2009 - 2016

Year	Scheduled flights	Non-scheduled flights ⁽ⁱ⁾	Total flights
2009	1,701	420	2,121
2010	1,227	426	1,653
2011	1,419	395	1,814
2012	1,381	364	1,745
2013	1,425	355	1,780
2014	1,507	330	1,837
2015	1,545	336	1,881
2016	2,130	354	2,484



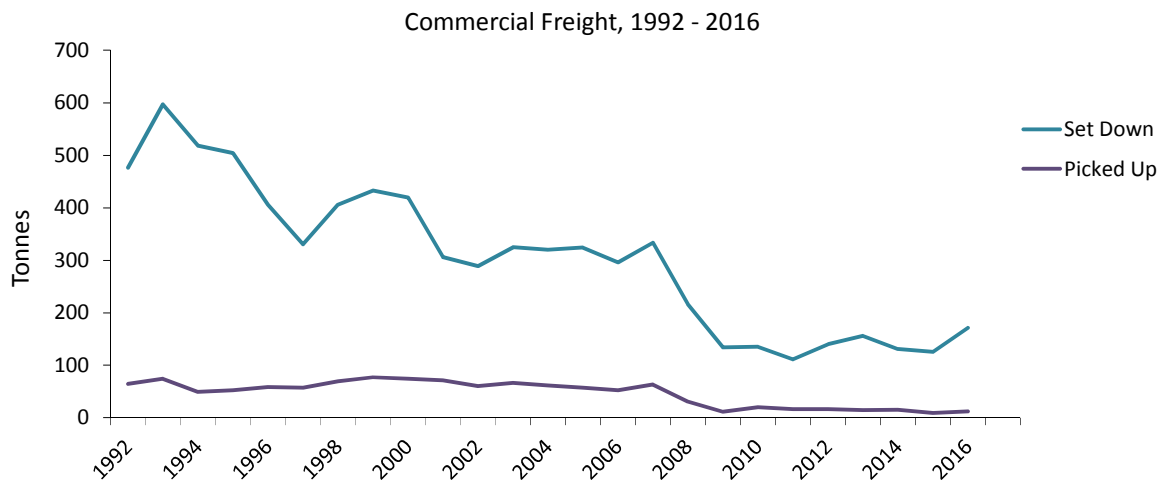
Note:

(i) Non-scheduled flights include commercial charters, business jets and light aircrafts.

7: Commercial Freight

Table 7.01 Commercial Freight, Set Down/Picked Up by Air, Gibraltar, 1992 - 2016

Year	Set Down (000's kgs)	% Change	Picked Up (000's kgs)	% Change
1992	476	-	64	-
1993	597	25.4	74	15.6
1994	518	-13.2	49	-33.8
1995	504	-2.7	52	6.1
1996	406	-19.4	58	11.5
1997	330	-18.7	57	-1.7
1998	406	23.0	69	21.1
1999	433	6.7	77	11.6
2000	419	-3.2	74	-3.9
2001	306	-27.0	71	-4.1
2002	289	-5.6	60	-15.5
2003	325	12.5	66	10.0
2004	320	-1.5	61	-7.6
2005	324	1.3	57	-6.6
2006	296	-8.6	52	-8.8
2007	333	12.5	63	21.2
2008	216	-35.1	31	-50.8
2009	134	-38.0	11	-64.5
2010	135	0.7	20	81.8
2011	111	-17.8	16	-20.0
2012	140	26.1	16	0.0
2013	156	11.4	14	-12.5
2014	131	-16.0	15	7.1
2015	125	-4.6	9	-40.0
2016	171	36.8	12	33.3



Note:
Commercial freight includes from/to all destinations.